

---

Keithley KPCI-3140 Series

# Using DriverLINX with Your Hardware

**KEITHLEY**

Information in this document is subject to change without notice. The software described in this document is furnished under a license agreement. The software may be used or copied only in accordance with the terms of the agreement.

SCIENTIFIC SOFTWARE TOOLS, INC. SHALL NOT BE LIABLE FOR ANY SPECIAL, INCIDENTAL, OR CONSEQUENTIAL DAMAGES RELATED TO THE USE OF THIS PRODUCT. THIS PRODUCT IS NOT DESIGNED WITH COMPONENTS OF A LEVEL OF RELIABILITY SUITABLE FOR USE IN LIFE SUPPORT OR CRITICAL APPLICATIONS.

This document may not, in whole or in part, be copied, photocopied, reproduced, translated or reduced to any electronic medium or machine readable form without prior written consent from Scientific Software Tools, Inc.

Keithley KPCI-3140 Series: Using DriverLINX with Your Hardware  
Copyright © 2000 by Scientific Software Tools, Inc.  
All rights reserved.

First Printing.  
SST 28-0100-3

DriverLINX, SSTNET, and LabOBJX are registered trademarks and DriverLINX/VB is a trademark of Scientific Software Tools, Inc.  
MetraByte is a trademark of Keithley Instruments, Inc.  
Microsoft and Windows are registered trademarks and Visual C++ and Visual Basic are trademarks of Microsoft Corporation.  
Borland is a registered trademark and Borland C++ and Delphi are trademarks of Borland International, Inc.  
All other brand and product names are trademarks or registered trademarks of their respective companies.

# Contents

|  |           |
|--|-----------|
| <b>Preface</b>   | <b>5</b>  |
| Software License and Software Disclaimer of Warranty ..... | 5         |
| About DriverLINX.....                                      | 7         |
| About This User’s Guide .....                              | 7         |
| Conventions Used in This Manual.....                       | 9         |
| <br>   |           |
| <b>Configuring the KPCI-3140 Series</b>                    | <b>11</b> |
| Introduction.....  | 11        |
| Configure DriverLINX Device Dialog .....                   | 12        |
| Device Subsystem Page.....                                 | 13        |
| Digital Input Subsystem Page.....                          | 14        |
| Digital Output Subsystem Page .....                        | 16        |
| Counter/Timer Subsystem Page.....                          | 18        |
| <br>   |           |
| <b>Using the KPCI-3140 Series with DriverLINX</b>          | <b>19</b> |
| Introduction.....  | 19        |
| KPCI-3140 Series Hardware Features .....                   | 19        |
| DriverLINX Hardware Model for KPCI-3140 Series .....       | 20        |
| DriverLINX Subsystems.....                                 | 20        |
| DriverLINX Modes .....                                     | 20        |
| DriverLINX Operations and Events .....                     | 22        |
| Logical Channels .....                                     | 23        |
| Buffers .....  | 23        |
| Connecting Signals to the KPCI-3140 Series .....           | 24        |
| Digital Input Subsystem Signals.....                       | 24        |
| Digital Output Subsystem Signals .....                     | 26        |
| Counter/Timer Subsystem Signals.....                       | 26        |
| Device Subsystem.....                                      | 28        |
| Device Modes .....   | 28        |
| Device Operations .....                                    | 28        |
| Digital Input Subsystem.....                               | 29        |
| Digital Input Modes.....                                   | 29        |
| Digital Input Operations .....                             | 29        |
| Digital Input Timing Events .....                          | 30        |
| Digital Input Start Events .....                           | 34        |
| Digital Input Stop Events.....                             | 35        |
| Digital Input Channels .....                               | 38        |
| Digital Input Buffers.....                                 | 41        |
| Digital Input Messages .....                               | 43        |
| Digital Output Subsystem .....                             | 44        |
| Digital Output Modes .....                                 | 44        |
| Digital Output Operations.....                             | 44        |
| Digital Output Timing Events.....                          | 45        |

|   |           |
|---|-----------|
| Digital Output Start Events .....                         | 50        |
| Digital Output Stop Events .....                          | 51        |
| Digital Output Channels .....                             | 54        |
| Digital Output Buffers .....                              | 57        |
| Digital Output Messages .....                             | 58        |
| Counter/Timer Subsystem.....                              | 59        |
| Counter/Timer Channel Usage.....                          | 60        |
| Clock Sources and Modes.....                              | 60        |
| Gate Settings .....                                       | 62        |
| Counter/Timer Tasks .....                                 | 62        |
| Counter/Timer Messages .....                              | 64        |
| <b>Uninstalling DriverLINX</b>                            | <b>65</b> |
| How do I uninstall DriverLINX? .....                      | 65        |
| <b>Troubleshooting</b>                                    | <b>69</b> |
| Solving Problems .....                                    | 69        |
| Solving Problems Recognizing and Installing Drivers ..... | 69        |
| Solving Problems Configuring the Drivers.....             | 70        |
| Solving Problems Loading Drivers.....                     | 70        |
| Generating a DriverLINX Configuration Report .....        | 73        |
| What is in the Report? .....                              | 73        |
| How do I Generate the Report? .....                       | 73        |

# Preface

---

## Software License and Software Disclaimer of Warranty

This is a legal document which is an agreement between you, the Licensee, and Scientific Software Tools, Inc. By opening this sealed diskette package, Licensee agrees to become bound by the terms of this Agreement, which include the Software License and Software Disclaimer of Warranty.

This Agreement constitutes the complete Agreement between Licensee and Scientific Software Tools, Inc. If Licensee does not agree to the terms of this Agreement, do not open the diskette package. Promptly return the unopened diskette package and the other items (including written materials, binders or other containers, and hardware, if any) that are part of this product to Scientific Software Tools, Inc. for a full refund. No refunds will be given for products that have opened disk packages or missing components.

### Licensing Agreement

**Copyright.** The software and documentation is owned by Scientific Software Tools, Inc. and is protected by both United States copyright laws and international treaty provisions. Scientific Software Tools, Inc. authorizes the original purchaser only (Licensee) to either (a) make one copy of the software solely for backup or archival purposes, or (b) transfer the software to a single hard disk only. The written materials accompanying the software may not be duplicated or copied for any reason.

**Trade Secret.** Licensee understands and agrees that the software is the proprietary and confidential property of Scientific Software Tools, Inc. and a valuable trade secret. Licensee agrees to use the software only for the intended use under this License, and shall not disclose the software or its contents to any third party.

**Copy Restrictions.** The Licensee may not modify or translate the program or related documentation **without the prior written consent of Scientific Software Tools, Inc.** All modifications, adaptations, and merged portions of the software constitute the software licensed to the Licensee, and the terms and conditions of this agreement apply to same. Licensee may not distribute copies, including electronic transfer of copies, of the modified, adapted or merged software or accompanying written materials to others. Licensee agrees not to reverse engineer, decompile or disassemble any part of the software.

Unauthorized copying of the software, including software that has been modified, merged, or included with other software, or of the written materials is expressly forbidden. Licensee may not rent, transfer or lease the software to any third parties. Licensee agrees to take all reasonable steps to protect Scientific Software Tools' software from theft, disclosure or use contrary to the terms of the License.

**License.** Scientific Software Tools, Inc. grants the Licensee only a non-exclusive right to use the serialized copy of the software on a single terminal connected to a single computer. The Licensee may not network the software or use it on more than one computer or computer terminal at the same time.

**Term.** This License is effective until terminated. This License will terminate automatically without notice from Scientific Software Tools, Inc. if Licensee fails to comply with any term or condition of this License. The Licensee agrees upon such termination to return or destroy the written materials and all copies of the software. The Licensee may terminate the agreement by returning or destroying the program and documentation and all copies thereof.

## Limited Warranty

Scientific Software Tools, Inc. warrants that the software will perform substantially in accordance with the written materials and that the program disk, instructional manuals and reference materials are free from defects in materials and workmanship under normal use for 90 days from the date of receipt. All express or implied warranties of the software and related materials are limited to 90 days.

Except as specifically set forth herein, the software and accompanying written materials (including instructions for use) are provided "as is" without warranty of any kind. Further, Scientific Software Tools, Inc. does not warrant, guarantee, or make any representations regarding the use, or the results of the use, of the software or written materials in terms of correctness, accuracy, reliability, currentness, or otherwise. The entire risk as to the results and performance of the software is assumed by Licensee and not by Scientific Software Tools, Inc. or its distributors, agents or employees.

**EXCEPT AS SET FORTH HEREIN, THERE ARE NO OTHER WARRANTIES, EITHER EXPRESS OR IMPLIED, INCLUDING BUT NOT LIMITED TO IMPLIED WARRANTIES OF MERCHANTABILITY AND FITNESS FOR A PARTICULAR PURPOSE, WITH RESPECT TO THE SOFTWARE, THE ACCOMPANYING WRITTEN MATERIALS, AND ANY ACCOMPANYING HARDWARE.**

**Remedy.** Scientific Software Tools' entire liability and the Licensee's exclusive remedy shall be, at Scientific Software Tools' option, either (a) return of the price paid or (b) repair or replacement of the software or accompanying materials. In the event of a defect in material or workmanship, the item may be returned within the warranty period to Scientific Software Tools for a replacement without charge, provided the licensee previously sent in the limited warranty registration board to Scientific Software Tools, Inc., or can furnish proof of the purchase of the program. This remedy is void if failure has resulted from accident, abuse, or misapplication. Any replacement will be warranted for the remainder of the original warranty period.

**NEITHER SCIENTIFIC SOFTWARE TOOLS, INC. NOR ANYONE ELSE WHO HAS BEEN INVOLVED IN THE CREATION, PRODUCTION, SALE OR DELIVERY OF THIS PRODUCT SHALL BE LIABLE FOR ANY DIRECT, INDIRECT, CONSEQUENTIAL, OR INCIDENTAL DAMAGES (INCLUDING DAMAGES FOR LOSS OF BUSINESS PROFITS, BUSINESS INTERRUPTION, LOSS OF BUSINESS INFORMATION AND THE LIKE) ARISING OUT OF THE USE OF OR THE INABILITY TO USE SUCH PRODUCT EVEN IF SCIENTIFIC SOFTWARE TOOLS HAS BEEN ADVISED OF THE POSSIBILITY OF SUCH DAMAGES. BECAUSE SOME JURISDICTIONS DO NOT ALLOW THE EXCLUSION OR LIMITATION OF LIABILITY FOR CONSEQUENTIAL OR INCIDENTAL DAMAGES, OR LIMITATIONS ON DURATION OF AN IMPLIED WARRANTY, THE ABOVE LIMITATIONS MAY NOT APPLY TO LICENSEE.**

This agreement is governed by the laws of the Commonwealth of Pennsylvania.

---

## About DriverLINX

Welcome to DriverLINX® for Microsoft® Windows™, the high-performance real-time data-acquisition device drivers for Windows application development.

DriverLINX is a language- and hardware-independent application programming interface designed to support hardware manufacturers' high-speed analog, digital, and counter/timer data-acquisition boards in Windows. DriverLINX is a multi-user and multitasking data-acquisition resource manager providing more than 100 services for foreground and background data acquisition tasks.

Included with your DriverLINX package are the following items:

- The DriverLINX API DLLs and drivers supporting your data-acquisition hardware
- Analog I/O Panel, a DriverLINX program that verifies the installation and configuration of DriverLINX for your analog input/output board and demonstrates several virtual bench-top instruments
- Source code for the sample programs
- The DriverLINX Application Programming Interface files for your compiler
- DriverLINX On-line Help System
- *DriverLINX Analog I/O Programming Guide*
- *DriverLINX Digital I/O Programming Guide*
- *DriverLINX Counter/Timer Programming Guide*
- *DriverLINX Technical Reference Manual*
- Supplemental Documentation on DriverLINX and your data-acquisition hardware

---

## About This User's Guide

The purpose of this manual is to help you quickly learn how to configure and use the hardware features of Keithley's KPCI-3140 Series boards with DriverLINX.

- For help installing and configuring your hardware and DriverLINX, please see the manual that accompanied your hardware.
- For more information on the DriverLINX API, please see the *DriverLINX Technical Reference Manual*.
- For additional help programming your board, please examine the source code examples on the Distribution Disks.

This manual contains the following chapters:

### **Configuring the KPCI-3140 Series**

Shows how to configure the KPCI-3140 Series using the *Configure DriverLINX Device* dialog box.

### **Using the KPCI-3140 Series with DriverLINX**

Shows how to set up DriverLINX with the *Edit Service Request* dialog box to use KPCI-3140 Series hardware features.

### **Uninstalling DriverLINX**

Describes how to remove DriverLINX hardware drivers and other files.

### **Troubleshooting**

Gives troubleshooting tips for installing, configuring, and loading DriverLINX drivers.



---

## Conventions Used in This Manual

The following notational conventions are used in this manual:

- A round bullet (●) identifies itemized lists.
- Numbered lists indicate a step-by-step procedure.
- DriverLINX Application Programming Interface and Windows macro and function names are set in bold when mentioned in the text.
- **DriverLINX** indicates the exported function name of the device driver DLL while DriverLINX indicates the product as a whole.
- DriverLINX Application Programming Interface identifiers, menu items, and Dialog Box names are italicized when mentioned in the text.
- *Italics* are used for emphasis.
- Source code and data structure examples are displayed in Courier typeface and bounded by a box with a single line.

|      |
|------|
| Code |
|------|

- A box with a double line bound tables of information.

|       |
|-------|
| Table |
|-------|

*Concept*

- Important concepts and notes are printed in the left margin.



# Configuring the KPCI-3140 Series

---

## Introduction

The installation program provides general instructions for installing and configuring DriverLINX. This manual explains the steps and special features that apply to Keithley's KPCI-3140 Series boards.

Installing and configuring DriverLINX for a Keithley KPCI-3140 Series board requires three steps:

1. **Install DriverLINX.** Follow the instructions given by the installation program. The *Read Me First* instructions explain the components and drivers you can install.
2. **Configure DriverLINX.** This creates a Logical Device, which stores configuration information for your board. See "Configure DriverLINX Device Dialog" on page 12 for configuration options specific to a Keithley KPCI-3140 Series model.
3. **Install your KPCI-3140 hardware.** Follow the instructions in your hardware manual.

After configuring DriverLINX, installing your board and restarting Windows, reopen the *DriverLINX Configuration Panel* to make sure that DriverLINX loaded the Logical Device for your board. If the Logical Device is not loaded, the Event Log may have a message from the driver that explains why. You can check the Event Log using the *DriverLINX Event Viewer* on the Windows Start Menu.

### **Windows NT**

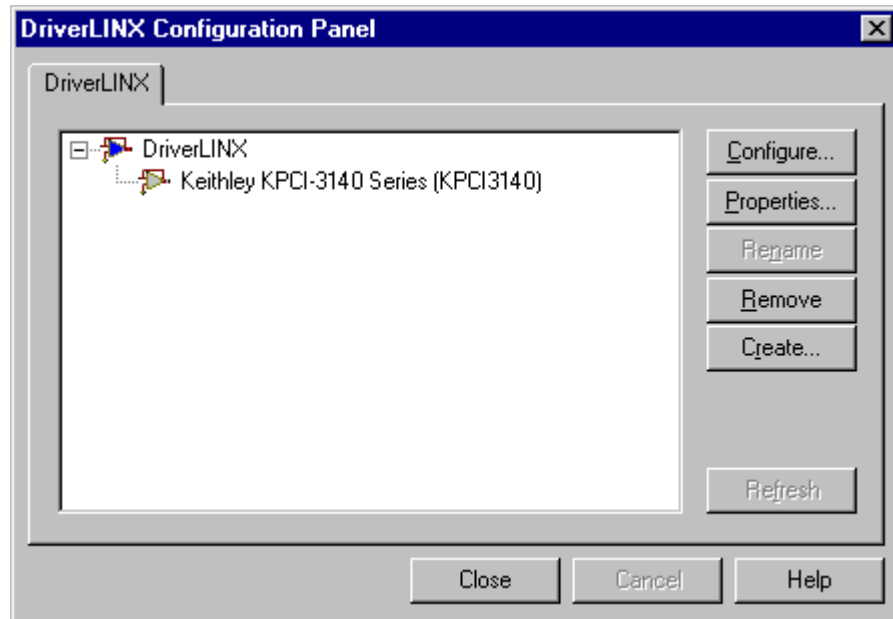
Under Windows NT 4.0, a Logical Device may not load because the operating system does not always configure Plug-and-Play PCI devices properly. To work around this, set your computer's BIOS to configure Plug-and-Play devices before it starts the operating system. On various computers the BIOS setting is called "Plug-and-Play Aware OS – Disabled" or "Plug & Play OS – No".

---

## Configure DriverLINX Device Dialog

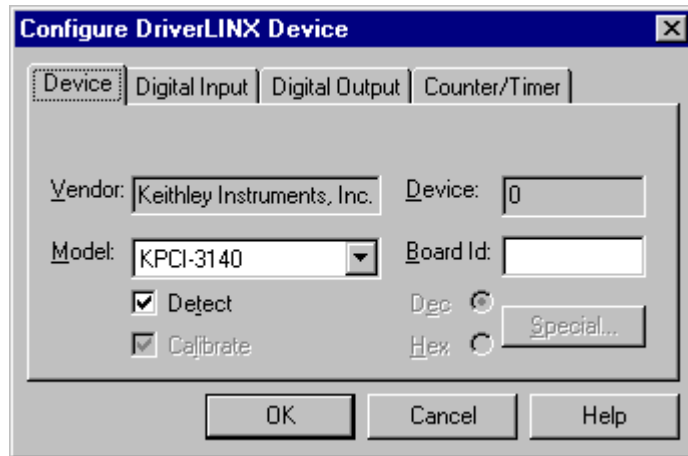
DriverLINX uses a standardized configuration protocol for all data-acquisition hardware. Configuration assigns an identifying device number to a specific KPCI-3140 Series board in your computer and allows you to enable or disable bus mastering.

The installation program automatically starts the *DriverLINX Configuration Panel*. To start it now, use the shortcut on the Windows Start Menu.



When you click the *Configure...* button on the *DriverLINX Configuration Panel*, DriverLINX displays the *Configure DriverLINX Device* dialog. The dialog has a page for each subsystem on the Keithley KPCI-3140 Series. The following sections describe your choices in configuring DriverLINX to work with your board.

## Device Subsystem Page



Use the Device subsystem page to tell DriverLINX the model name of your KPCI-3140 Series board.

### ***Vendor***

The *Vendor* property displays “Keithley Instruments, Inc.” It is a read-only property.

### ***Device***

The *Device* property designates the Logical Device you are configuring. It is a read-only property. To change it, first save (**OK**) or quit (**Cancel**) the current configuration. Then select or create a new Logical Device using the *DriverLINX Configuration Panel*.

### ***Model***

The *Model* property selects or indicates the hardware model of the board you’re configuring.

#### **Windows NT**

Select the following model:

KPCI-3140

#### **Windows 95/98**

Windows 95 automatically determines the model of your board so DriverLINX disables Model selection.

### ***Board Id***

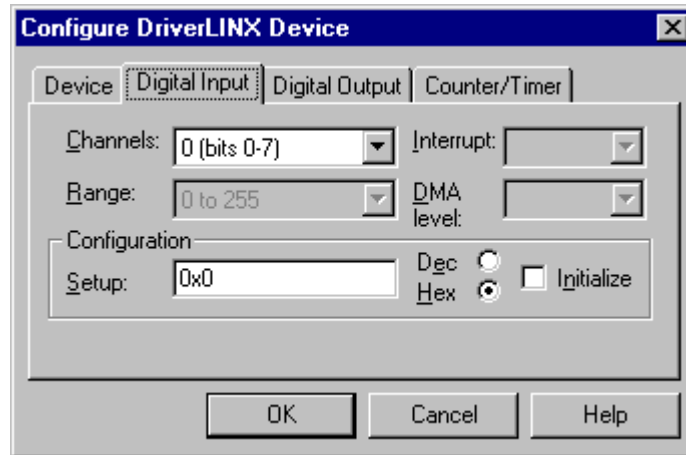
The KPCI-3140 Series boards do not have unique serial numbers that DriverLINX can use to match a Logical Device to a board while loading the driver. Under Windows 95/98, DriverLINX can match a Logical Device to a board based on the bus slot. Under Windows NT, DriverLINX matches Logical Devices in the sequence that Windows enumerates them on the bus.

#### **Windows NT**

DriverLINX does not use the Board Id property.

DriverLINX assigns a Board Id based on bus slot.

## Digital Input Subsystem Page



Use the Digital Input subsystem page to set configurable digital channels as input or output.

### Channels

The *Channels* property allows you to select a Logical Channel for configuration or viewing the channel's range.

The KPCI-3140 Series supports both fixed and configurable digital channels. DriverLINX defines the following Logical Channels for the KPCI-3140 Series Digital Input Subsystem:

#### Model KPCI-3140

| Logical Channel | DriverLINX Function                  | KPCI-3100 Series External Connector |
|-----------------|--------------------------------------|-------------------------------------|
| 0               | Digital Input/Output                 | Digital I/O Bank A 0 ... 7          |
| 1               | Digital Input/Output                 | Digital I/O Bank B 0 ... 7          |
| 2               | Digital Input/Output                 | Digital I/O Bank C 0 ... 7          |
| 3               | Digital Input/Output                 | Digital I/O Bank D 0 ... 7          |
| 4               | Digital Input (interrupt register)   | Digital I/O Bank D 0 ... 7          |
| 5               | External Clock (pattern-sensitive)   | Digital I/O Bank D 0 ... 7          |
| 6               | External Clock (edge-sensitive)      | Digital I/O Bank D 0 ... 7          |
| 7               | External Trigger (pattern-sensitive) | Digital I/O Bank D 0 ... 7          |
| 8               | External Trigger (edge-sensitive)    | Digital I/O Bank D 0 ... 7          |

### ***Range***

The *Range* property specifies the supported digital input range for the selected Logical Channel. This is a read-only property.

### ***Interrupt***

Windows automatically determines the interrupt level for the KPCI-3140 board. DriverLINX disables this property.

### ***DMA***

The KPCI-3140 Series does not use DMA channels for direct memory transfers. DriverLINX disables this property.

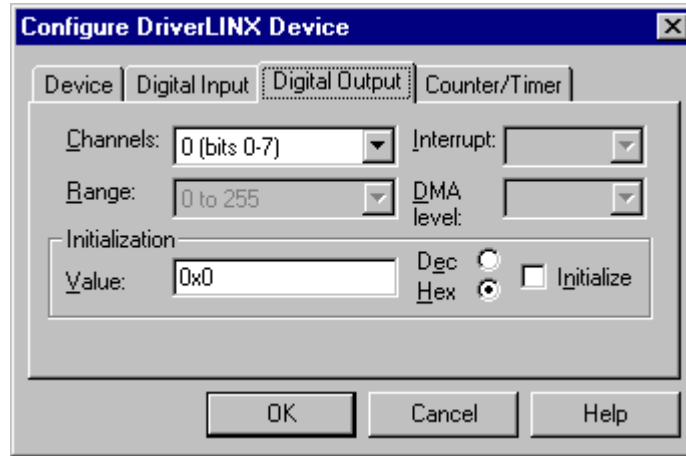
### ***Configuration Setup***

The *Configuration Setup* property specifies the hardware configuration of the digital I/O ports. Logical Channels 0 through 1 are configurable as input or output. Enter 1 to initially configure the selected channel as input or 0 to configure it as output and check the *Initialize* box.

### ***Initialize***

Checking the *Initialize* check box instructs DriverLINX to use the *Configuration Setup* property to configure the selected digital I/O channel.

## Digital Output Subsystem Page



Use the Digital Output subsystem page to change the default digital output port initialization values.

### **Channels**

The *Channels* property allows you to select a Logical Channel for initialization or viewing the channel's range.

#### **Model KPCI-3140**

| Logical Channel | DriverLINX Function  | KPCI-3100 Series External Connector |
|-----------------|----------------------|-------------------------------------|
| 0               | Digital Input/Output | Digital I/O Bank A 0 ... 7          |
| 1               | Digital Input/Output | Digital I/O Bank B 0 ... 7          |
| 2               | Digital Input/Output | Digital I/O Bank C 0 ... 7          |
| 3               | Digital Input/Output | Digital I/O Bank D 0 ... 7          |

### **Range**

The *Range* property specifies the supported digital output range for the selected Logical Channel. This is a read-only property.

### **Interrupt**

Windows automatically determines the interrupt level for the KPCI-3140 board. DriverLINX disables this property.

### **DMA**

The KPCI-3140 Series does not use DMA channels for direct memory transfers. DriverLINX disables this property.

### **Initialization Value**

The *Initialization Value* property specifies the digital output value DriverLINX will write to the selected Logical Channel upon hardware initialization. DriverLINX only writes this value if you enable the *Initialize* check box.



### ***Initialize***

Checking the *Initialize* check box instructs DriverLINX to use the *Initialization Value* property for digital output port initialization.

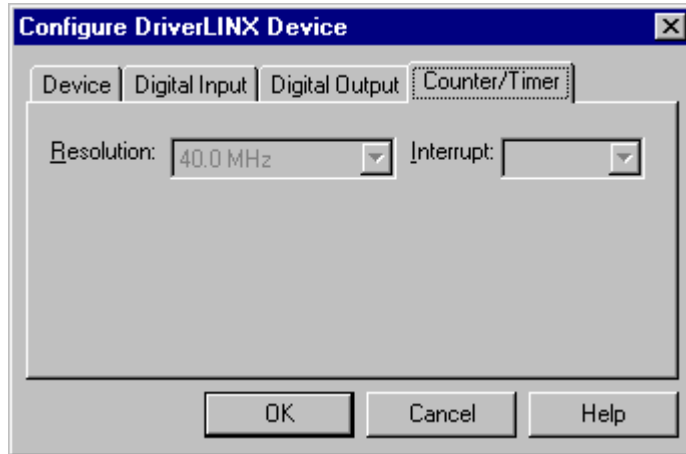
### ***Dec***

This check box converts the *Initialization Value* property to decimal.

### ***Hex***

This check box converts the *Initialization Value* property to hexadecimal.

## Counter/Timer Subsystem Page



Use the Counter/Timer subsystem page to view the clock source frequency.

### ***Resolution***

The *Resolution* property specifies the clock frequency of the master oscillator. All models have a 20 MHz clock source for pacing input/output tasks and counter/timer functions.

### ***Interrupt***

Windows automatically determines the interrupt level for the KPCI-3140 board. DriverLINX disables this property.

# Using the KPCI-3140 Series with DriverLINX

---

## Introduction

See the Counter/Timer, Digital I/O or Analog I/O Programming Guides for an overview of DriverLINX programming.

This chapter shows you how to set up and use KPCI-3140 Series hardware features with DriverLINX.

The descriptions here use the *Edit Service Request* dialog for language and API independence. For the correct syntax with the language you're using, please see the *DriverLINX Technical Reference Manuals*. For DriverLINX examples in your programming language, please see the source code examples in the subdirectories of your DriverLINX installation directory or on the original distribution media.

---

## KPCI-3140 Series Hardware Features

The KPCI-3140 Series offers your data-acquisition application a wide variety of useful features. Digital I/O ports support pre- and post-triggering. Eight of the counter/timers are user-accessible. DriverLINX accesses these features through its hardware independent Applications Programming Interface (API).

The following table is a cross-reference between hardware features and the DriverLINX features that access them.

| Hardware Feature           | DriverLINX Feature   |
|----------------------------|--|
| Digital Input/Output Ports | <ul style="list-style-type: none"><li>• Digital Input Subsystem</li><li>• Digital Output Subsystem</li></ul>   |
| Digital Port Configuration | Initial Configuration: <ul style="list-style-type: none"><li>• Configuration Setup</li></ul> Application Configuration: <ul style="list-style-type: none"><li>• Digital Input Digital Channel Configuration</li><li>• Digital Output Digital Channel Configuration</li></ul> |

| Hardware Feature               | DriverLINX Feature   |
|--------------------------------|--|
| Digital triggering             | Digital Input: <ul style="list-style-type: none"> <li>• Digital Start Event (Post-Triggering)</li> <li>• Digital Stop Event (Pre-Triggering)</li> </ul> Digital Output: <ul style="list-style-type: none"> <li>• Digital Start Event (Post-Triggering)</li> <li>• Digital Stop Event (Pre-Triggering)</li> </ul> |
| User-accessible counter/timers | <ul style="list-style-type: none"> <li>• Counter/Timer Subsystem</li> </ul>  |

---

## DriverLINX Hardware Model for KPCI-3140 Series

DriverLINX provides a portable, hardware-independent API for data-acquisition boards while still allowing applications to access unique or proprietary hardware features of specific products. To achieve this goal, DriverLINX maps a hardware-independent, or abstract, data-acquisition model onto KPCI-3140 Series hardware capabilities.

The following sections describe how DriverLINX implements KPCI-3140 Series hardware features as Subsystems, Modes, Operations, Events, Logical Channels, Buffers, and Messages.

### DriverLINX Subsystems

The KPCI-3140 Series supports the following DriverLINX subsystems:

1. **Device**—refers to a KPCI-3140 Series board as a whole.
2. **Digital Input**—refers to the digital input ports as well as 1-bit digital control signals and external clock inputs.
3. **Digital Output**—refers to the digital output ports.
4. **Counter/Timer**—refers to the onboard counter/timer channels for pacing digital input/output or performing measuring and waveform generation functions.

### DriverLINX Modes

Applications use modes in Service Requests to advise DriverLINX on their preferred hardware data transfer technique. The DriverLINX modes fall into two general classes:

- **Foreground or synchronous modes.** The calling application does not regain control until DriverLINX completes the Service Request. DriverLINX supports this mode for simple, single value I/O operations or software housekeeping functions that DriverLINX can complete without a significant delay.

- **Background or asynchronous modes.** The calling application regains control as soon as DriverLINX initiates the task. The calling application must synchronize with the data-acquisition task using status polling or DriverLINX's messages (preferred). DriverLINX supports this mode for buffered data transfers or for commands that require a significant time to complete.

DriverLINX supports four modes with the KPCI-3140 Series for its commands (Service Requests).

- **Polled Mode**—This is a foreground or synchronous operation. DriverLINX supports this mode for simple, single-value I/O operations that the data-acquisition board can complete without significant delay.
- **Interrupt Mode**—This is a background or asynchronous operation. DriverLINX transfers data between the computer's memory and the data-acquisition board using hardware interrupts and programmed I/O transfers.
- **Other Mode**—This is a foreground or synchronous operation. DriverLINX supports this mode for initialization, configuration, calibration, data conversion, and timebase operations.

The following table summarizes the data acquisition modes that DriverLINX supports for each subsystem with the Keithley KPCI-3140 Series.

| Subsystem      | Polled | Interrupt | Other |
|----------------|--------|-----------|-------|
| Digital Input  | √      | √         | √     |
| Digital Output | √      | √         | √     |
| Counter/Timer  | √      | √         | √     |
| Device         |        |           | √     |

*KPCI-3140 Series Supported DriverLINX Modes.*

## DriverLINX Operations and Events

Applications construct DriverLINX data-acquisition tasks by combining a small number of DriverLINX operations and events in many possible ways. The following table summarizes the operations and events that DriverLINX supports for the Keithley KPCI-3140 Series. Later sections for each DriverLINX subsystem will describe the operations and events in more detail.

**Note:** In addition to the operations shown in the table below, all subsystems allow the *MESSAGE* operation in any Mode.

| Subsystem             | Operation                | Events     |           |              |
|-----------------------|--------------------------|------------|-----------|--------------|
|                       |                          | Timing     | Start     | Stop         |
| Mode                  |                          |            |           |              |
| <b>Digital Input</b>  |                          |            |           |              |
| Polled                | Start                    | null       | null, cmd | null, TC     |
| Interrupt             | Start, Stop, Status      | rate, dig  | cmd, dig  | cmd, TC, dig |
| Other                 | Initialize, Configure    | DIO Setup  |           |              |
| <b>Digital Output</b> |                          |            |           |              |
| Polled                | Start                    | null       | null, cmd | null, TC     |
| Interrupt             | Start, Stop, Status      | rate, dig  | cmd, dig  | cmd, TC, dig |
| Other                 | Initialize, Configure    | DIO Setup  |           |              |
| <b>Counter/Timer</b>  |                          |            |           |              |
| Polled                | Start, Stop, Status      | null, rate | null, cmd | null, TC     |
| Interrupt             | Start, Stop, Status      | rate       | cmd, dig  | cmd, TC, dig |
| Other                 | Initialize, Configure    | rate       |           |              |
| <b>Device</b>         |                          |            |           |              |
| Other                 | Initialize, Capabilities |            |           |              |

*Allowed Operations and Events for KPCI-3140 Series Subsystems and Modes.*

The following list explains the Event abbreviations in the preceding table:

- **null**—Null or None Event specifies when a Service Request does not require an event
- **cmd**—Command Event specifies when DriverLINX starts or stops a task on software command
- **TC**—Terminal Count Event specifies when DriverLINX processes all data buffers once
- **rate**—Rate Event specifies how DriverLINX paces or clocks data transfer

- **dig**—Digital Event specifies a trigger, clock, or other control signal to pace, start, or stop a task
- **DIO Setup**—DIO Setup Event assigns a digital channel to either the Digital Input or Digital Output Subsystem.

## Logical Channels

DriverLINX designates the individually addressable hardware channels for each subsystem as “Logical Channels.” Generally, the zero-based Logical Channel numbering sequence closely follows the hardware manufacturer’s channel numbering scheme.

In some cases, however, DriverLINX assigns Logical Channel numbers to hardware features that users don’t commonly think of as “channels.” For instance, DriverLINX commonly models external hardware clock input lines, external hardware trigger input lines, and external interrupt inputs as 1-bit digital Logical Channels. In other cases, DriverLINX models subsystem-specific features, such as internal pacer clocks, as members of a more general-purpose set of counter/timer channels.

For a list of DriverLINX assigned Logical Channel numbers, see the notes on each supported subsystem.

## Buffers

Applications usually use data buffers to exchange data between the application and the data-acquisition hardware. When using data buffers, please note the following points about DriverLINX’s data buffers:

- DriverLINX supports data-acquisition tasks with 1 to 255 data buffers per task.
- DriverLINX imposes no size limits on a single buffer, although the operating system or some hardware products may have size restrictions.
- User applications must allow DriverLINX to allocate all data buffers to guarantee application portability to different hardware and operating systems and to insure that the hardware can physically access the buffer memory.
- User applications usually don’t have concurrent or immediate access to the in-use data buffer while DriverLINX is executing a data-acquisition task.

---

# Connecting Signals to the KPCI-3140 Series

The Keithley hardware manual describes the data and control signals for the KPCI-3140 Series and the connector pinouts for these signals. This section summarizes how DriverLINX numbers the I/O data signals and how DriverLINX uses the control connections for external clock, trigger, and gating inputs.

## Digital Input Subsystem Signals

The Digital Input Subsystem has four programmable digital input/output ports, one of which can be used for timing or triggering. It also has an interrupt status register that DriverLINX models a digital input channel. DriverLINX maps these signals to Logical Channels as shown in the following table:

### Model KPCI-3140

| Logical Channel | DriverLINX Function                  | KPCI-3100 Series External Connector |
|-----------------|--------------------------------------|-------------------------------------|
| 0               | Digital Input/Output                 | Digital I/O Bank A 0 ... 7          |
| 1               | Digital Input/Output                 | Digital I/O Bank B 0 ... 7          |
| 2               | Digital Input/Output                 | Digital I/O Bank C 0 ... 7          |
| 3               | Digital Input/Output                 | Digital I/O Bank D 0 ... 7          |
| 4               | Digital Input (interrupt register)   | Digital I/O Bank D 0 ... 7          |
| 5               | External Clock (pattern-sensitive)   | Digital I/O Bank D 0 ... 7          |
| 6               | External Clock (edge-sensitive)      | Digital I/O Bank D 0 ... 7          |
| 7               | External Trigger (pattern-sensitive) | Digital I/O Bank D 0 ... 7          |
| 8               | External Trigger (edge-sensitive)    | Digital I/O Bank D 0 ... 7          |

*How DriverLINX maps digital input hardware channels to Logical Channels.*

### Notes:

- If a channel is configured for output, reading it using the Digital Input subsystem returns the last value written.
- The External Trigger and External Clock channels are not available for reading but are available for clocking and triggering.
- Applications can assign a configurable channel to either digital subsystem using a Configure operation. (See “Digital Channel Configuration” on page 29.)

### Digital Input Pacing, Triggering and Gating Signals

Digital input tasks are either polled mode or interrupt mode. In interrupt mode, the Digital Input subsystem can use several control signals that DriverLINX defines as external clocks and triggers as shown in the following table:



| Connector Name           | DriverLINX Usage  |
|--------------------------|---|
| Digital I/O Bank D 0...7 | External trigger: <ul style="list-style-type: none"> <li>• Digital Start Event (Post-Triggering)</li> <li>• Digital Stop Event (Pre-Triggering)</li> </ul> External pacer clock: <ul style="list-style-type: none"> <li>• Digital Timing Event</li> </ul> |
| User Clock Inputs        | <ul style="list-style-type: none"> <li>• Divider-Rate Generator: External Clocking</li> </ul>   |

*How DriverLINX uses digital input control signals.*

## Digital Output Subsystem Signals

The Digital Output Subsystem has four programmable digital input/output ports. DriverLINX maps these signals to Logical Channels as shown in the following table:

### Model KPCI-3140

| Logical Channel | DriverLINX Function  | KPCI-3100 Series External Connector |
|-----------------|----------------------|-------------------------------------|
| 0               | Digital Input/Output | Digital I/O Bank A 0 ... 7          |
| 1               | Digital Input/Output | Digital I/O Bank B 0 ... 7          |
| 2               | Digital Input/Output | Digital I/O Bank C 0 ... 7          |
| 3               | Digital Input/Output | Digital I/O Bank D 0 ... 7          |

*How DriverLINX maps digital output hardware channels to Logical Channels.*

### Notes:

- If a channel is configured for output, reading it (using the Digital Input subsystem) returns the last value written.
- Applications can assign a configurable channel to either digital subsystem using a Configure operation. (See “Digital Channel Configuration” on page 29.)

### Digital Output Pacing, Triggering and Gating Signals

Digital output tasks are either polled mode or interrupt mode. In interrupt mode, the Digital Output subsystem can use several control signals that DriverLINX defines as external clocks and triggers as shown in the following table:

| Connector Name           | DriverLINX Usage  |
|--------------------------|---|
| Digital I/O Bank D 0...7 | External trigger: <ul style="list-style-type: none"> <li>• Digital Start Event (Post-Triggering)</li> <li>• Digital Stop Event (Pre-Triggering)</li> </ul> External pacer clock: <ul style="list-style-type: none"> <li>• Digital Timing Event</li> </ul> |
| User Clock Inputs        | <ul style="list-style-type: none"> <li>• Divider-Rate Generator: External Clocking</li> </ul>   |

*How DriverLINX uses digital input control signals.*

## Counter/Timer Subsystem Signals

The Counter/Timer subsystem has a Logical Channel for each of the counter/timer chip’s twelve counter/timers. The first eight have external clock, gate and output pins but support only counter/timer tasks. The last four have only clock inputs but do support pacing tasks on other subsystems.

DriverLINX maps these signals as shown in the following table:

**Model KPCI-3140**

| Logical Channel | DriverLINX Function            | KPCI-3100 Series External Connector*                         |
|-----------------|--------------------------------|--|
| 0               | Pacing and Counter/Timer tasks | User Clock Input 0<br>User Clock Output 0<br>External Gate 0 |
| 1               | Pacing and Counter/Timer tasks | User Clock Input 1<br>User Clock Output 1<br>External Gate 1 |
| 2               | Pacing and Counter/Timer tasks | User Clock Input 2<br>User Clock Output 2<br>External Gate 2 |
| 3               | Pacing and Counter/Timer tasks | User Clock Input 3<br>User Clock Output 3<br>External Gate 3 |
| 4               | Pacing and Counter/Timer tasks | User Clock Input 4<br>User Clock Output 4<br>External Gate 4 |
| 5               | Pacing and Counter/Timer tasks | User Clock Input 5<br>User Clock Output 5<br>External Gate 5 |
| 6               | Pacing and Counter/Timer tasks | User Clock Input 6<br>User Clock Output 6<br>External Gate 6 |
| 7               | Pacing and Counter/Timer tasks | User Clock Input 7<br>User Clock Output 7<br>External Gate 7 |
| 8               | Pacing                         |  |
| 9               | Pacing                         |  |
| 10              | Pacing                         |  |
| 11              | Pacing                         |  |

\*Interrupts from Digital I/O Bank D 0 ... 7 can start or stop any counter/timer.

*How DriverLINX maps counter/timer hardware channels to Logical Channels.*

---

## Device Subsystem

The following sections describe how DriverLINX implements Device Subsystem features for the KPCI-3140 Series.

### Device Modes

The Device Subsystem supports only DriverLINX's *Other* mode for all operations.

### Device Operations

The KPCI-3140 Series Device Subsystem supports the following DriverLINX operations:

*If another application is using the same data-acquisition board, DriverLINX will prevent Device Initialization from interfering with another application's data-acquisition tasks.*

- **Initialize**—DriverLINX aborts all data-acquisition tasks for every subsystem controlled by the current application. DriverLINX then initializes each subsystem.
- **Capabilities**—DriverLINX provides hardware-specific and configuration information in the form of a Logical Device Descriptor database. (If you are using the DriverLINX ActiveX controls, access the Logical Device Descriptor with a DriverLINXLDD control rather than with this operation.)

---

# Digital Input Subsystem

The following sections describe how DriverLINX implements Digital Input Subsystem features for the KPCI-3140 Series.

## Digital Input Modes

The Digital Input Subsystem supports the following modes:

- **Polled**—For single-value or scan digital input samples.
- **Interrupt**—For buffered transfers using programmed I/O.
- **Other**—For subsystem initialization and configuration.

## Digital Input Operations

The KPCI-3140 Series Digital Input Subsystem supports the following DriverLINX operations:

- **Initialize**—aborts any active interrupt data-acquisition tasks and stops the associated clocks. However, DriverLINX prevents one application from interfering with another application's data-acquisition tasks.
- **Configure**—assigns a configurable digital channel to the input subsystem.
- **Start**—initiates a data-acquisition task using the Mode, Timing, Start, and Stop Events, the Logical Channels, and the Buffers the application specified in the Service Request.
- **Status**—reports the buffer position of the next sample that DriverLINX will write into a buffer.
- **Stop**—terminates a digital input data-acquisition task.
- **Message**—displays a pop-up dialog box for the user containing the text for the current DriverLINX error message.

## *Digital Channel Configuration*

The KPCI-3140 Series has four configurable digital channels. To use a digital channel as an input, you must first assign it to the Digital Input Subsystem using the “Configure DriverLINX Device Dialog” (page 12) or by using a Configure operation.

To configure a digital channel, submit a service request with following settings:

- **Subsystem**—Digital Input or Digital Output
- **Mode**—Other
- **Operation**—Configure
- **Timing Event**—DIO Setup
- **DIO Setup Channel**—Logical Channel number
- **DIO Setup Mode**—DIO BASIC

For more information, see the following topics in the *Digital I/O Programming Guide*:

- Configuring a Digital Port at Run Time
- Determining the Digital Port Configuration

**Example:** For a programming example, see DIOCNFIG in your DrvLINX4\Source folder.

## Digital Input Timing Events

Timing Events specify how the hardware paces or clocks the reading of Digital Input samples. DriverLINX uses the Timing Event to program when the KPCI-3140 Series reads the next digital input sample from the ports.

The KPCI-3140 Series supports the following Timing Events:



- **None**—Input requires no pacing as DriverLINX is reading only a single value or scan.
- **Rate**—The KPCI-3140 Series supports fixed rate sampling using internal and external clocks.
- **Digital**—The KPCI-3140 Series supports sampling using digital input lines.

### *None or Null Timing Event*

The Null Event specifies that the task does not need a clock to determine when to read the next sample.

### *Rate Timing Event*

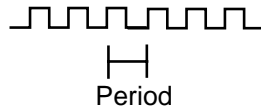
The KPCI-3140 Series supports the following Rate Event for digital input:

- **Rate Generator**—Generates a fixed rate clock with equal time intervals between tics.  

- **Divider**—Generates a fixed rate clock by dividing an external input frequency.  


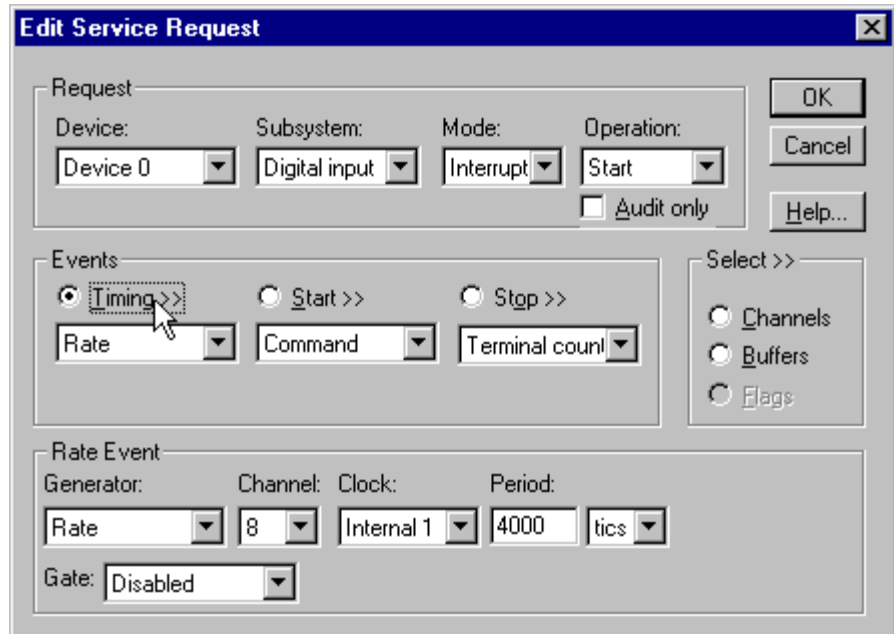
KPCI-3140 Series boards have a fixed 40 MHz master clock frequency. The sample period range depends on the counter/timer. The 24-bit Interval Timers limit the period to  $2^{24} - 1$  tics, or 419430  $\mu$ s (2.39 Hz), and the 16-bit User Clocks limit the period to  $2^{16} - 1$  tics, or 1638  $\mu$ s (611 Hz). Consult your hardware manual for details.

## Rate Generator: Internal Clocking

An internally clocked Rate Generator produces a fixed rate clock with equal time intervals between tics.



Use an internally clocked rate generator when you want to acquire all digital input scans at equally spaced time intervals.



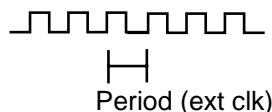
*How to set up the KPCI-3140 Series for fixed rate sampling using an internal clock.*

*For hardware independence, specify the clock channel using the symbolic constant, DEFAULTTIMER, which always maps to the default Logical Channel for digital output timing.*

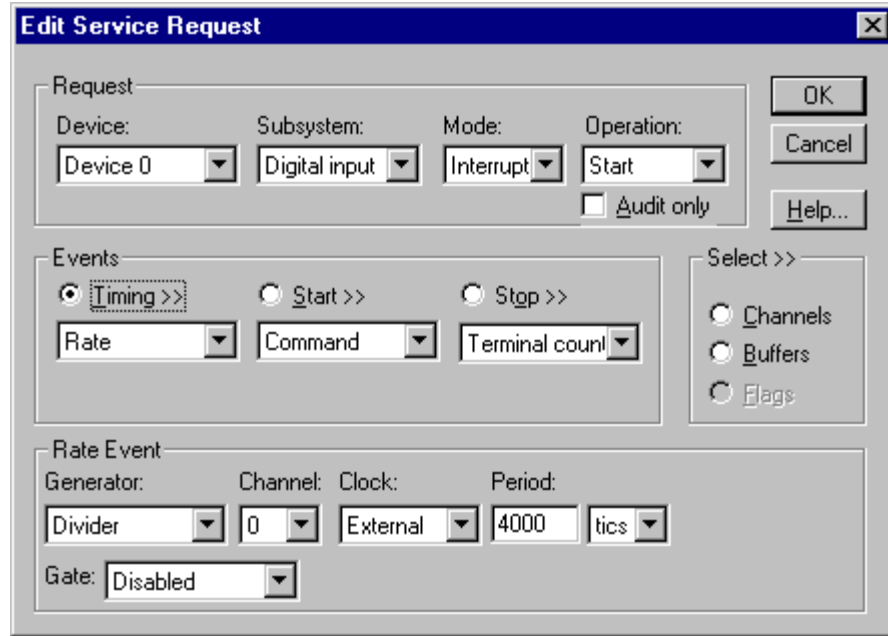
- Specify internal clocking using a **Rate Generator** on any available channel with the **Internal1** Clock source.
- The *Period* property specifies the time interval between samples in tics.
- The KPCI-3140 Series does not support gating the Logical Channels 8-11. Therefore, only Disabled and NoConnect settings are valid for the *Gate* property for these channels.

## Divider-Rate Generator: External Clocking

A divided, externally clocked Rate Generator produces a rate clock with unknown time intervals between tics.



Use a divider-rate generator when you want to synchronize samples with a recurrent, higher frequency, external signal. In this mode you will need a specified number of external clock tics for each sample or scan you want to acquire.



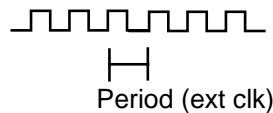
How to set up the KPCI-3108 Series for rate sampling using a divided external clock.

Be sure that the external clock source is TTL compatible, 0 V minimum to +5 V maximum!

- Specify external clocking using a **Divider** Generator on Channel 0-7 with an **External**, or **External+** Clock source.
- Users should connect the external clock signal to the associated User Clock Input line.
- Specify the divisor for the external frequency in the *Period* property.
- The *Gate* property specifies how the gate signal affects the operation of the pacer clock. Valid settings for the TGIN gate are Enabled, Disabled, NoConnect, High Level and Low Level.

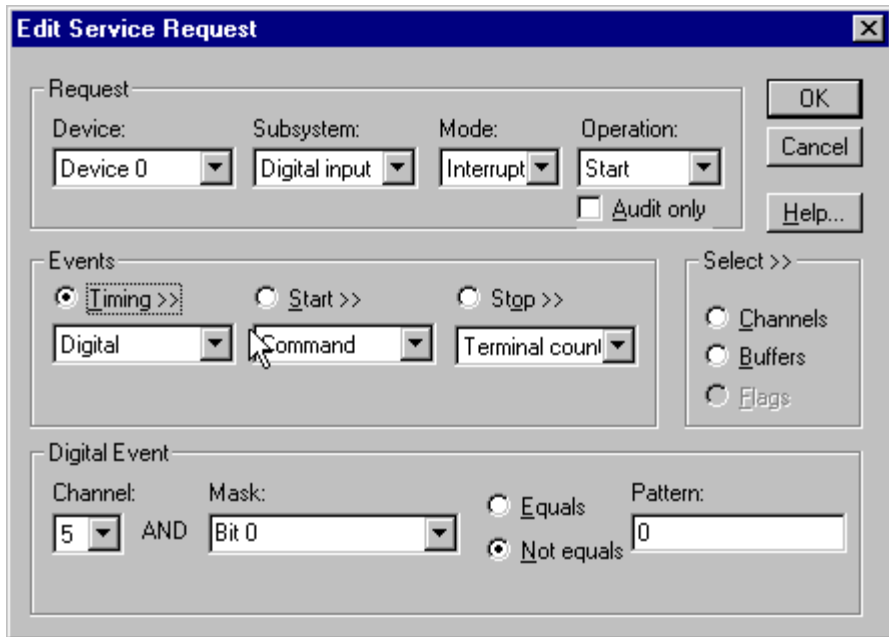
### Digital Timing Event

DriverLINX supports Digital Events for timing based on patterns or edges of external clock sources.



Use an externally clocked rate generator when you want to synchronize digital input samples with a recurrent external signal. You need a separate external clock tic for each sample or scan you want to acquire.





How to set up for external rate sampling using a digital event.

- Specify the *Channel* as **5** for pattern-sensitive clocking or **6** for edge-sensitive clocking. For hardware-independence, you can specify the hardware pattern-sensitive, external clock channel by the symbolic constant, *DI\_EXTCLK*.

Unlike most hardware, the edge-sensitive setting samples upon any change in any of the masked lines. For compatibility with the single-line, edge-sensitive clocking supported by other hardware, use a pattern-sensitive, 1-bit clock with a **Not equals** match setting.

- Users should connect the external clock signals to the selected lines of Digital I/O Bank D.
- Specify the *Mask* property as any value between 0 and 255 to indicate that DriverLINX should only compare the selected 1-bit digital input values against the *Pattern* property.
- For pattern-sensitive clocking, specify the *Match* property as **Equals** or **Not equals**. For edge-sensitive clocking, specify the *Match* property as **Not equals**.
- For pattern-sensitive clocking, specify the *Pattern* property as any subset of the *Mask* bits. The edge-sensitive channel does not use the *Pattern* property—specify **0** in this case.
- The channel *Simultaneous* property determines whether the driver samples a single channel or an entire scan in each clock event. If you check *Simultaneous*, the driver samples all of the channels in the scan.

## Digital Input Start Events

Start Events specify when the KPCI-3140 Series hardware starts reading digital input data.

The KPCI-3140 Series supports the following Start Events for digital input:

- **None**—Use this event when the DriverLINX operation does not require a Start Event.
- **Command**—DriverLINX starts the task on software command, i.e., as soon as DriverLINX finishes programming the KPCI-3140 hardware for the task.
- **Digital**—The hardware starts acquiring samples when the hardware detects the digital channel input satisfies the condition specified in the Start Event.

### ***None or Null Start Event***

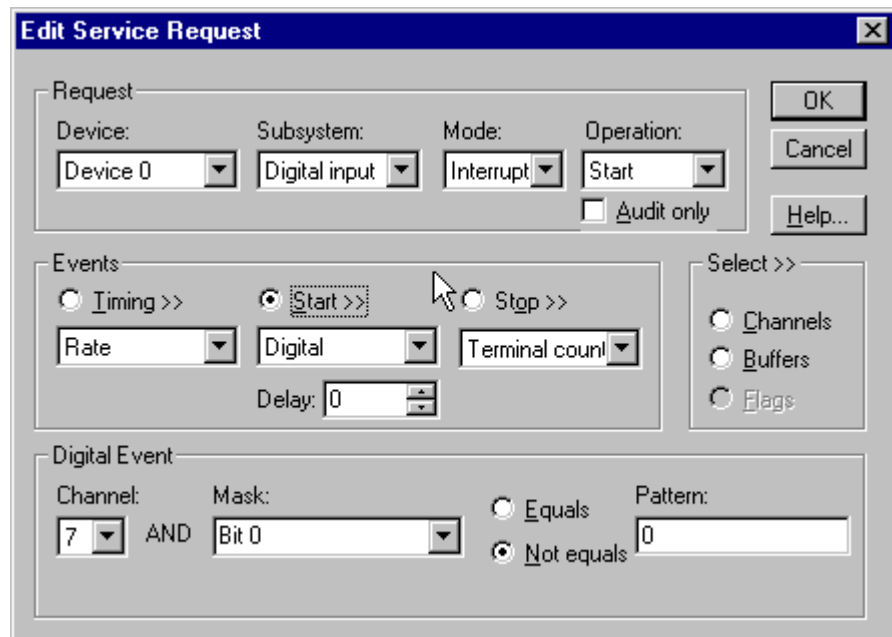
The Null Event specifies that the task does not need a Start Event to begin the task.

### ***Command Start Event***

The Command Event starts data acquisition as soon as DriverLINX has completed programming the KPCI-3140 Series hardware with the task parameters.

### ***Digital Start Event (Post-Triggering)***

The KPCI-3140 can acquire digital input samples *after* the hardware detects a digital trigger condition. Use post-triggering when you want to synchronize the start of data acquisition with an external signal.



*How to set up the KPCI-3140 Series for post-triggered digital input.*

Digital Start Events contain *mask*, *pattern*, and *match* fields. The mask is logically ANDed with the digital input data on the Logical Channel and then compared with the *pattern* for a match/mismatch.

- Specify the *Channel* as **7** for pattern-sensitive triggering or **8** for edge-sensitive triggering. For hardware-independence, you can specify the hardware pattern-sensitive, external trigger channel by the symbolic constant, *DI\_EXTTRG*.

Unlike most hardware, the edge-sensitive setting triggers upon any change in any of the masked lines. For compatibility with the single-line, edge-sensitive trigger supported by other hardware, use a pattern-sensitive, 1-bit trigger with a **Not equals** match setting.

- Users should connect the external trigger signals to the selected lines of Digital I/O Bank D.
- Specify the *Mask* property as any value between 0 and 255 to indicate that DriverLINX should only compare the selected 1-bit digital input values against the *Pattern* property.
- For pattern-sensitive triggering, specify the *Match* property as **Equals** or **Not equals**. For edge-sensitive triggering, specify the *Match* property as **Not equals**.
- For pattern-sensitive triggering, specify the *Pattern* property as any subset of the *Mask* bits. The edge-sensitive channel does not use the *Pattern* property—specify **0** in this case.
- Specify the *Delay* property as **0**; the hardware does not support delayed triggering.

## Digital Input Stop Events

Stop Events specify when the KPCI-3140 Series hardware stops reading digital input data.

The KPCI-3140 Series supports the following Stop Events for digital input:

- **None**—Use this event when the DriverLINX operation does not require a Stop Event.
- **Command**—DriverLINX stops the task on software command, i.e., when the application issues a Service Request with a *Stop* operation.
- **Terminal count**—DriverLINX stops the task after the KPCI-3140 Series hardware has filled all the data buffers once.
- **Digital**—The hardware stops acquiring samples when the hardware detects the digital Logical Channel input satisfies the condition specified in the Stop Event.

### ***None or Null Stop Event***

The Null Event specifies that the task does not need a Stop Event to end the task.

### ***Command Stop Event***

The Command Event stops data acquisition when the user application changes the *Operation* property in the Service Request to *Stop* and resubmits the Service Request to DriverLINX.

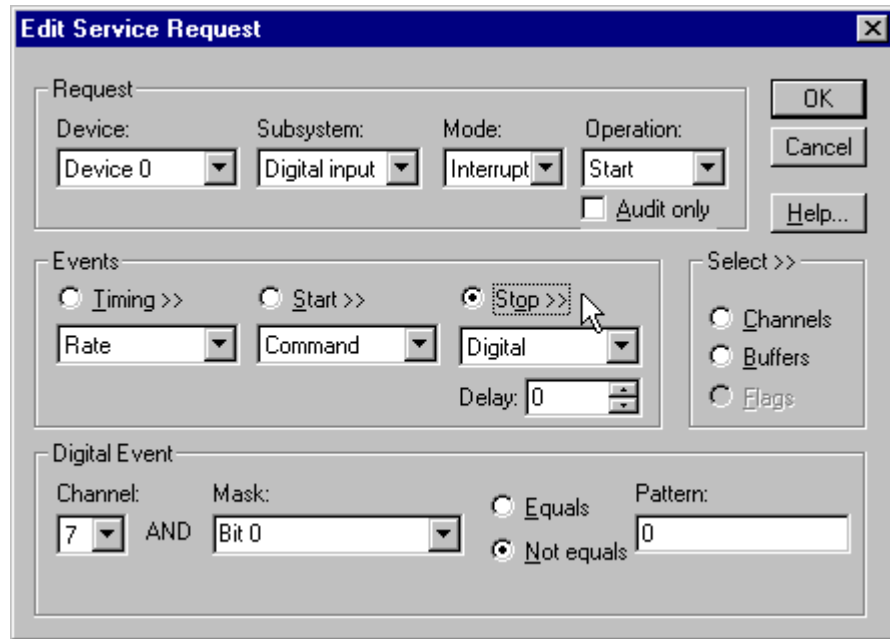
In Stop-on-Command mode, DriverLINX continuously cycles through all the data buffers, filling them with digital input data from the data-acquisition hardware.

### Terminal Count Stop Event

The Terminal Count Event stops data acquisition after DriverLINX has read the digital input data into all the data buffers *once*. Use terminal count when you want to read a fixed amount of data.

### Digital Stop Event (Pre-Triggering)

The KPCI-3140 can acquire digital input samples *until* the hardware detects a digital trigger condition. Use pre-triggering when you want to synchronize the end of data acquisition with an external signal.



How to set up the KPCI-3140 Series for pre-triggered digital input.

Digital Stop Events contain *mask*, *pattern*, and *match* fields. The mask is logically ANDed with the digital input data on the Logical Channel and then compared with the *pattern* for a match/mismatch.

- Specify the *Channel* as **7** for pattern-sensitive triggering or **8** for edge-sensitive triggering. For hardware-independence, you can specify the hardware pattern-sensitive, external trigger channel by the symbolic constant, *DI\_EXTTRG*.

Unlike most hardware, the edge-sensitive setting triggers upon any change in any of the masked lines. For compatibility with the single-line, edge-sensitive trigger supported by other hardware, use a pattern-sensitive, 1-bit trigger with a **Not equals** match setting.

- Users should connect the external trigger signals to the selected lines of Digital I/O Bank D.
- Specify the *Mask* property as any value between 0 and 255 to indicate that DriverLINX should only compare the selected 1-bit digital input values against the *Pattern* property.

- For pattern-sensitive triggering, specify the *Match* property as **Equals** or **Not equals**. For edge-sensitive triggering, specify the *Match* property as **Not equals**.
- For pattern-sensitive triggering, specify the *Pattern* property as any subset of the *Mask* bits. The edge-sensitive channel does not use the *Pattern* property—specify **0** in this case.
- Specify the *Delay* property as **0**; the hardware does not support delayed triggering.

**Note:**

When the hardware detects the trigger, DriverLINX sends a StopEvent message (or event) that identifies sample following the trigger. For more information, see “Digital Input Messages” on page 43.

## Digital Input Channels

The KPCI-3140 Series allows applications to specify the digital channels using three techniques:

- **Start Channel**—Acquire data from a single channel.
- **Start/Stop Channel Range**—Acquire data from a consecutive range of channels.
- **Channel List**—Acquire data from a list of channels.

### Digital Input Logical Channels

The KPCI-3140 Series supports four configurable digital channels. DriverLINX defines the following Logical Channels for the KPCI-3140 Series Digital Input Subsystem:

#### Model KPCI-3140

| Logical Channel | DriverLINX Function                  | KPCI-3100 Series External Connector |
|-----------------|--------------------------------------|-------------------------------------|
| 0               | Digital Input/Output                 | Digital I/O Bank A 0 ... 7          |
| 1               | Digital Input/Output                 | Digital I/O Bank B 0 ... 7          |
| 2               | Digital Input/Output                 | Digital I/O Bank C 0 ... 7          |
| 3               | Digital Input/Output                 | Digital I/O Bank D 0 ... 7          |
| 4               | Digital Input (interrupt register)   | Digital I/O Bank D 0 ... 7          |
| 5               | External Clock (pattern-sensitive)   | Digital I/O Bank D 0 ... 7          |
| 6               | External Clock (edge-sensitive)      | Digital I/O Bank D 0 ... 7          |
| 7               | External Trigger (pattern-sensitive) | Digital I/O Bank D 0 ... 7          |
| 8               | External Trigger (edge-sensitive)    | Digital I/O Bank D 0 ... 7          |

The KPCI-3140 boards have four 8-bit banks of programmable digital I/O lines. Users can configure a port as input or output using the DriverLINX Configuration Panel. Application can override a port’s configuration using a Configure service request. For details, see “Digital Channel Configuration” on page 29.

Bank D lines set a flag and raise an interrupt upon any rising or failing signal edge when they are used as timing or triggering signals. For maximum application flexibility, applications can read the interrupt flag register as Logical Channel 4 (along with other channels if desired) using a polled or interrupt mode task.

To support DriverLINX’s hardware-independent API, the driver defines additional Logical Channels (5 through 8) for Bank D. Channels 5 and 6 are timing event channels, while 7 and 8 are start and stop event channels. At each interrupt, the driver inspects the interrupt register and compares the Port D reading with event parameters in the service request. For the pattern-sensitive channels (5 and 7), the driver responds to the event if the masked reading and pattern meet the match

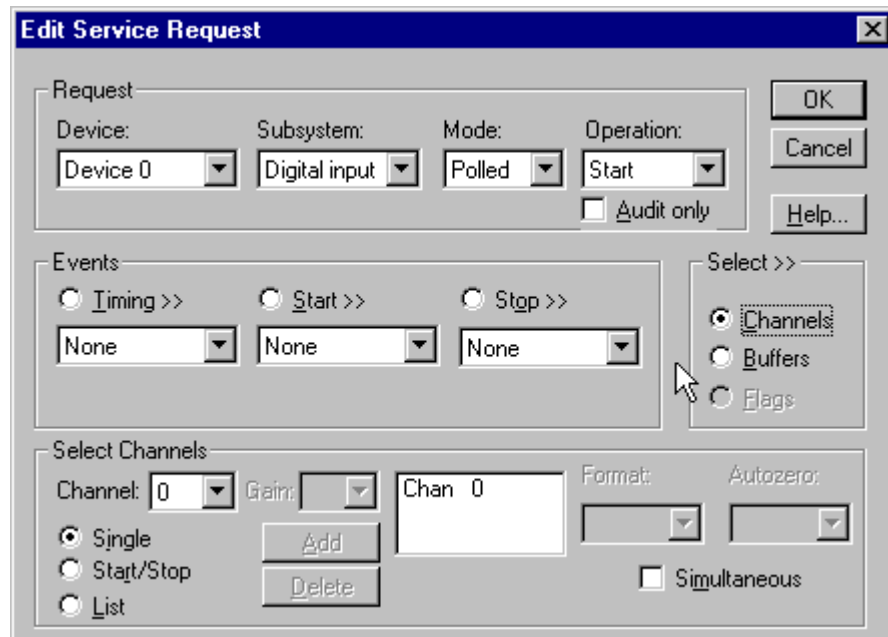
condition. For the edge-sensitive channels (6 and 8), the driver responds to the event if any of the masked lines have their interrupt flags set.

**Notes:**

- When using the external clock or trigger channels, Logical Channel 3 is normally configured as an input port. If not, interrupts occur when values are written to the port rather than in response to external signals.
- The DriverLINX symbolic channels, DI\_EXTTRG and DI\_EXTCLK, map to the pattern-sensitive channels so they behave similarly to hardware that has a single, edge-sensitive trigger or external clock input. By matching the pattern, the driver ensures the triggers occur only on the selected edge and clocks occur on only one edge of an external clock pulse.

## Single Channel Digital Input

In single channel mode, the KPCI-3140 Series acquires all data from one channel.

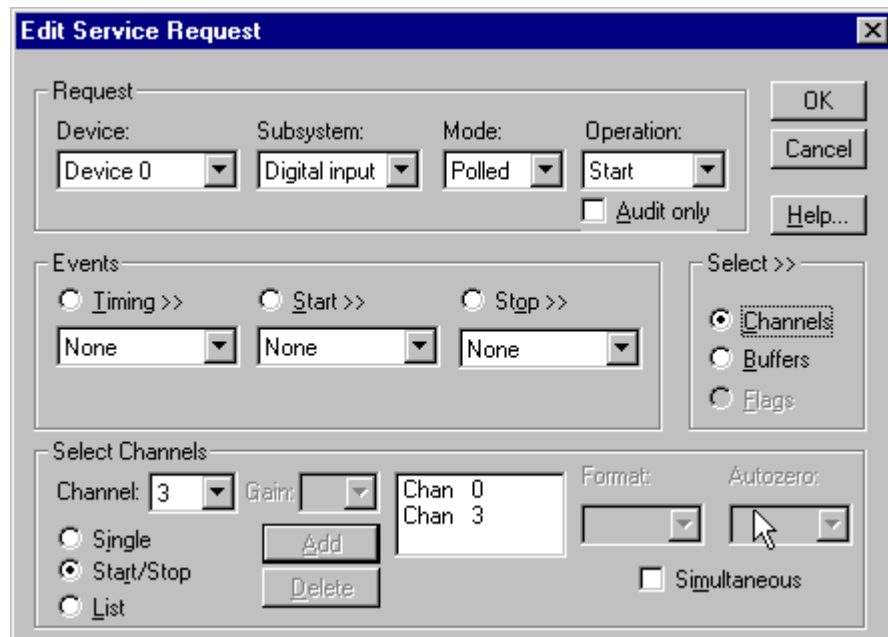


*How to set up the KPCI-3140 Series for sampling on a single channel.*

## Multi-channel Digital Input Range

In multi-channel range mode, the KPCI-3140 Series acquires data from a consecutive range of digital channels.

- The Stop Channel must be greater than the Start Channel.

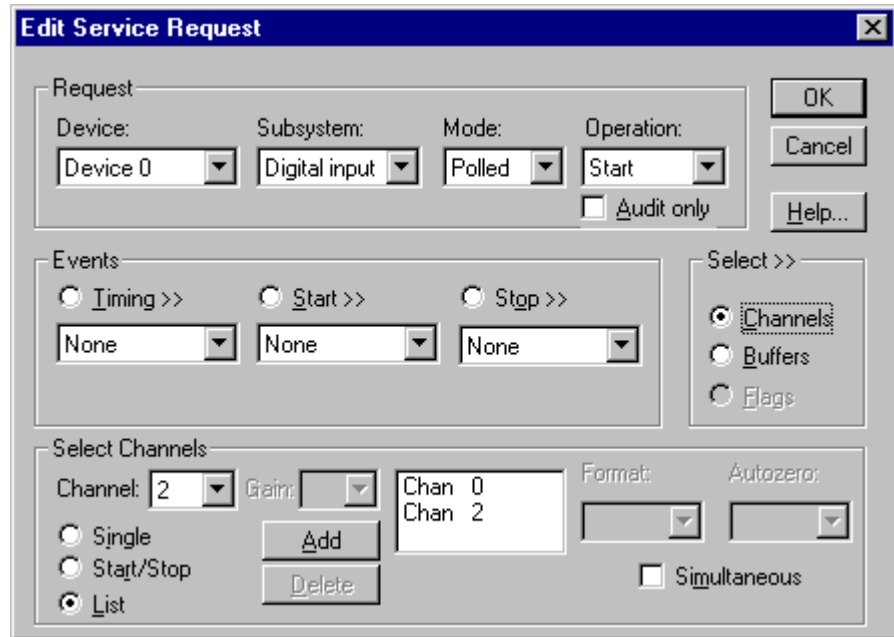


*How to set up the KPCI-3140 Series for sampling on a consecutive range of channels.*



## Multi-channel Digital Input List

In multi-channel list mode, the KPCI-3140 Series acquires data from an arbitrary list of digital channels.

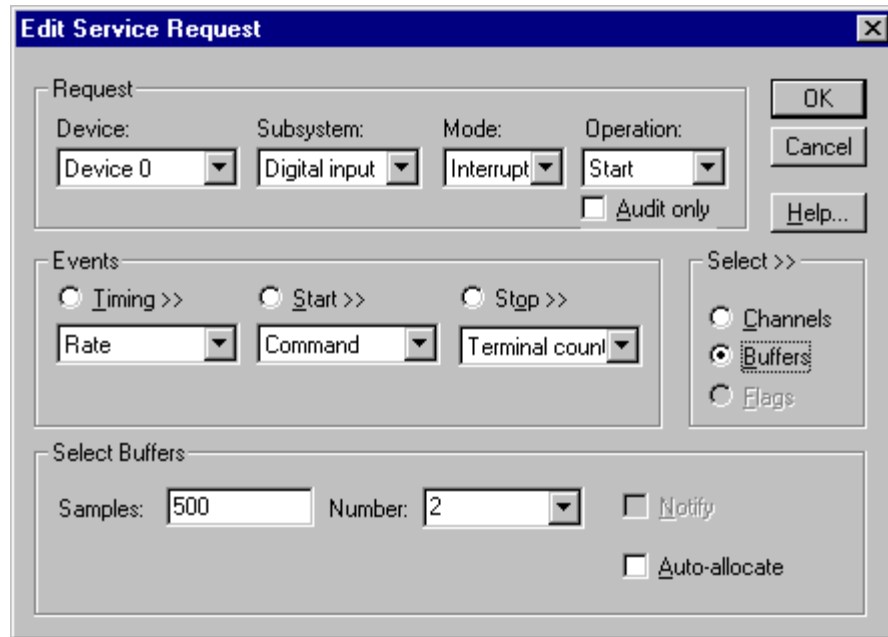


*How to set up the KPCI-3140 Series to sample from an arbitrary list of channels.*

## Digital Input Buffers

DriverLINX supports single-value, single-scan and buffered digital input.

- **For single-value input**, specify the *Number* of buffers as **0**. The buffer for a single value is the *ioValue* property.
- **For single-scan input**, specify the *Number* of buffers as **1** and the number of *Samples* equal to the number of channels.
- **For buffered input**, specify the *Number* of buffers from **1** to **255** and the number of *Samples* as desired.



*How to set up the KPCI-3140 Series to read digital samples using data buffers.*

### **Buffer Usage**

DriverLINX fills buffers sequentially until the task stops. During the task, only complete buffers are available to the application. Except for tasks that stop on terminal count, the last buffer may be only partially full. Use a Status operation to determine the location of the last sample.

## Digital Input Messages

For digital input operations, DriverLINX can report the following messages to the application:

| <b>DriverLINX Message</b> | <b>Explanation</b>   |
|---------------------------|--|
| Service Start             | DriverLINX has started the acquisition task.                             |
| Service Done              | DriverLINX has completed the acquisition task.                           |
| Start Event               | DriverLINX has detected the hardware start event.                        |
| Stop Event                | DriverLINX has detected the hardware stop event.                         |
| Buffer Filled             | DriverLINX has filled a buffer.  |
| Data Lost                 | DriverLINX has detected a data overrun                                   |
| Critical Error            | DriverLINX has encountered an unexpected hardware or software condition. |

*DriverLINX Event messages for digital input.*

For detailed explanations of these messages see one of the following references:

- *DriverLINX Technical Reference Manual* for C/C++ users
- *DriverLINX/VB Technical Reference Manual* for VB or Delphi users

---

# Digital Output Subsystem

The following sections describe how DriverLINX implements Digital Output Subsystem features for the KPCI-3140 Series.

## Digital Output Modes

The Digital Output Subsystem supports the following modes:

- **Polled**—For single-value or scan digital output samples.
- **Interrupt**—For buffered transfers using programmed I/O.
- **Other**—For subsystem initialization and configuration.

## Digital Output Operations

The KPCI-3140 Series Digital Output Subsystem supports the following DriverLINX operations:

- **Initialize**—aborts any active interrupt data-acquisition tasks and stops the associated clocks. However, DriverLINX prevents one application from interfering with another application's data-acquisition tasks.
- **Configure**—assigns a configurable digital channel to the output subsystem.
- **Start**—initiates a data-acquisition task using the Mode, Timing, Start, and Stop Events, the Logical Channels, and the Buffers the application specified in the Service Request.
- **Status**—reports the buffer position of the next sample that DriverLINX will read from a buffer.
- **Stop**—terminates a digital output data-acquisition task.
- **Message**—displays a pop-up dialog box for the user containing the text for the current DriverLINX error message.

### ***Digital Output Initialization***

By default, Digital Output Subsystem initialization writes zeros to all the digital I/O ports configured for output. You can specify a different initial output value using the *Configure DriverLINX Device* dialog. See “Digital Output Subsystem Page” on page 16.

### ***Digital Channel Configuration***

The KPCI-3140 Series has four configurable digital channels. To use a digital channel as an output, you must first assign it to the Digital Output Subsystem using the “Configure DriverLINX Device Dialog” (page 12) or by using a Configure operation. See “Digital Channel Configuration” on page 29 for more information on the configure operation.

## Digital Output Timing Events

Timing Events specify how the hardware paces or clocks writing Digital Output samples. DriverLINX uses the Timing Event to program when the KPCI-3140 Series writes the next digital output sample to the ports.

The KPCI-3140 Series supports the following Timing Events for digital output:



- **None**—Output requires no pacing as DriverLINX is writing only a single value or scan.
- **Rate**—The KPCI-3140 Series supports fixed rate sampling using internal and external clocks.
- **Digital**—The KPCI-3140 Series supports sampling using digital input lines.

### *None or Null Timing Event*

The Null Event specifies that the task does not need a clock to determine when to write the next sample.

### *Rate Timing Event*

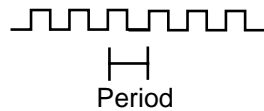
The KPCI-3140 Series supports the following Rate Event for digital input:

- **Rate Generator**—Generates a fixed rate clock with equal time intervals between tics.  

- **Divider**—Generates a fixed rate clock by dividing an external input frequency.  


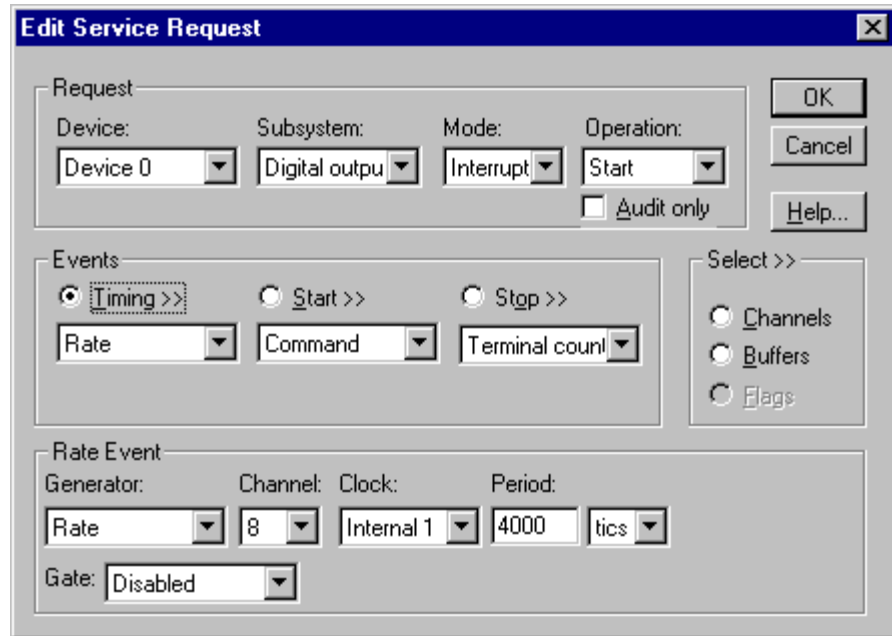
KPCI-3140 Series boards have a fixed 40 MHz master clock frequency. The sample period range depends on the counter/timer. The 24-bit Interval Timers limit the period to  $2^{24} - 1$  tics, or 419430  $\mu$ s (2.39 Hz), and the 16-bit User Clocks limit the period to  $2^{16} - 1$  tics, or 1638  $\mu$ s (611 Hz). Consult your hardware manual for details.

## Rate Generator: Internal Clocking

An internally clocked Rate Generator produces a fixed rate clock with equal time intervals between tics.



Use an internally clocked rate generator when you want to acquire all digital input scans at equally spaced time intervals.



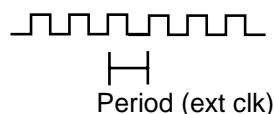
How to set up the KPCI-3140 Series for fixed rate sampling using an internal clock.

*For hardware independence, specify the clock channel using the symbolic constant, DEFAULTTIMER, which always maps to the default Logical Channel for digital output timing.*

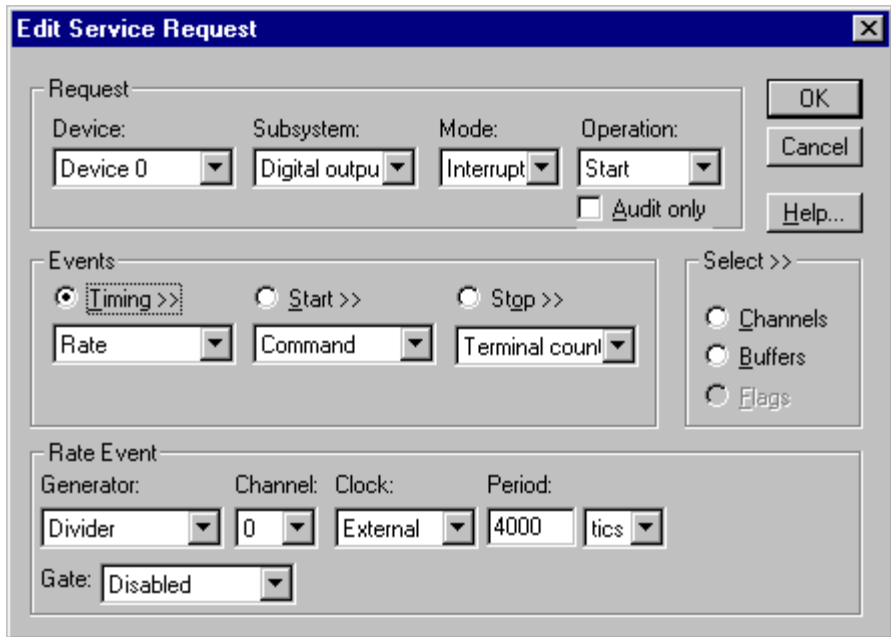
- Specify internal clocking using a **Rate Generator** on any available channel with the **Internal1** Clock source.
- The **Period** property specifies the time interval between samples in tics.
- The KPCI-3140 Series does not support gating the Logical Channels 8-11. Therefore, only Disabled and NoConnect settings are valid for the **Gate** property for these channels.

## Divider-Rate Generator: External Clocking

A divided, externally clocked Rate Generator produces a rate clock with unknown time intervals between tics.



Use a divider-rate generator when you want to synchronize samples with a recurrent, higher frequency, external signal. In this mode you will need a specified number of external clock tics for each sample or scan you want to acquire.



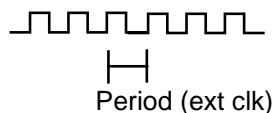
How to set up the KPCI-3108 Series for rate sampling using a divided external clock.

Be sure that the external clock source is TTL compatible, 0 V minimum to +5 V maximum!

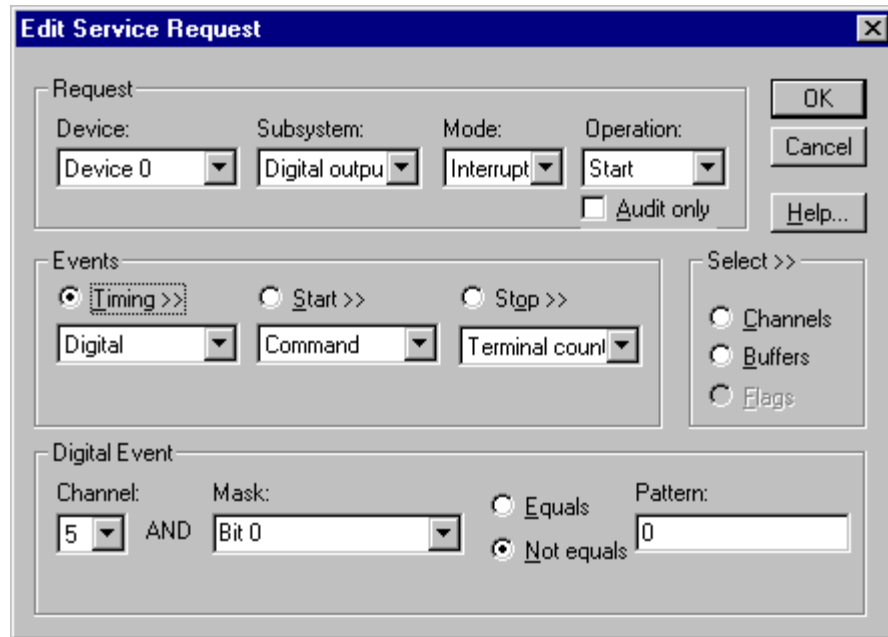
- Specify external clocking using a **Divider** Generator on Channel 0-7 with an **External**, or **External+** Clock source.
- Users should connect the external clock signal to the associated User Clock Input line.
- Specify the divisor for the external frequency in the *Period* property.
- The *Gate* property specifies how the gate signal affects the operation of the pacer clock. Valid settings for the TGIN gate are Enabled, Disabled, NoConnect, High Level and Low Level.

### Digital Timing Event

DriverLINX supports Digital Events for timing based on patterns or edges of external clock sources.



Use an externally clocked rate generator when you want to synchronize digital input samples with a recurrent external signal. You need a separate external clock tic for each sample or scan you want to acquire.



How to set up for external rate sampling using a digital event.

- Specify the *Channel* as **5** for pattern-sensitive clocking or **6** for edge-sensitive clocking. For hardware-independence, you can specify the hardware pattern-sensitive, external clock channel by the symbolic constant, *DI\_EXTCLK*.

Unlike most hardware, the edge-sensitive setting samples upon any change in any of the masked lines. For compatibility with the single-line, edge-sensitive clocking supported by other hardware, use a pattern-sensitive, 1-bit clock with a **Not equals** match setting.

- Users should connect the external clock signals to the selected lines of Digital I/O Bank D.
- Specify the *Mask* property as any value between 0 and 255 to indicate that DriverLINX should only compare the selected 1-bit digital input values against the *Pattern* property.
- For pattern-sensitive clocking, specify the *Match* property as **Equals** or **Not equals**. For edge-sensitive clocking, specify the *Match* property as **Not equals**.
- For pattern-sensitive clocking, specify the *Pattern* property as any subset of the *Mask* bits. The edge-sensitive channel does not use the *Pattern* property—specify **0** in this case.
- The channel *Simultaneous* property determines whether the driver samples a single channel or an entire scan in each clock event. If you check *Simultaneous*, the driver samples all of the channels in the scan.





## Digital Output Start Events

Start Events specify when the KPCI-3140 Series hardware starts writing digital output data.

The KPCI-3140 Series supports the following Start Events for digital output:

- **None**—Use this event when the DriverLINX operation does not require a Start Event.
- **Command**—DriverLINX starts the task on software command, i.e., as soon as DriverLINX finishes programming the KPCI-3140 hardware for the task.
- **Digital**—The hardware starts writing samples when the hardware detects the digital channel input satisfies the condition specified in the Start Event.

### ***None or Null Start Event***

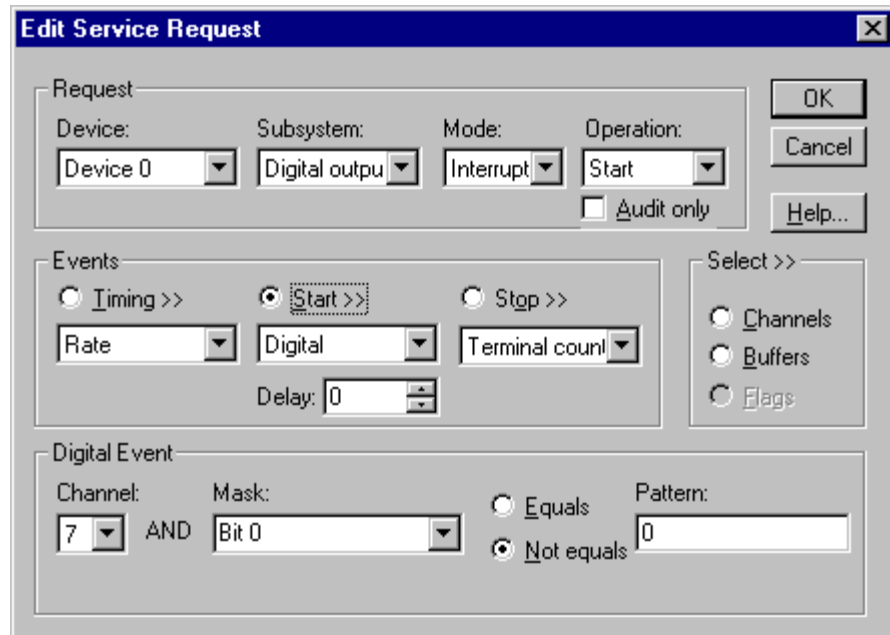
The Null Event specifies that the task does not need a Start Event to begin the task.

### ***Command Start Event***

The Command Event starts data acquisition as soon as DriverLINX has completed programming the KPCI-3140 hardware with the task parameters.

### ***Digital Start Event (Post-Triggering)***

The KPCI-3140 can write samples *after* the hardware detects a digital trigger condition. Use post-triggering when you want to synchronize the start of data acquisition with an external signal.



*How to set up the KPCI-3140 Series for post-triggered digital output.*

Digital Start Events contain *mask*, *pattern*, and *match* fields. The mask is logically ANDed with the digital input data on the Logical Channel and then compared with the *pattern* for a match/mismatch.

- Specify the *Channel* as **7** for pattern-sensitive triggering or **8** for edge-sensitive triggering. For hardware-independence, you can specify the hardware pattern-sensitive, external trigger channel by the symbolic constant, *DI\_EXTTRG*.

Unlike most hardware, the edge-sensitive setting triggers upon any change in any of the masked lines. For compatibility with the single-line, edge-sensitive trigger supported by other hardware, use a pattern-sensitive, 1-bit trigger with a **Not equals** match setting.

- Users should connect the external trigger signals to the selected lines of Digital I/O Bank D.
- Specify the *Mask* property as any value between 0 and 255 to indicate that DriverLINX should only compare the selected 1-bit digital input values against the *Pattern* property.
- For pattern-sensitive triggering, specify the *Match* property as **Equals** or **Not equals**. For edge-sensitive triggering, specify the *Match* property as **Not equals**.
- For pattern-sensitive triggering, specify the *Pattern* property as any subset of the *Mask* bits. The edge-sensitive channel does not use the *Pattern* property—specify **0** in this case.
- Specify the *Delay* property as **0**; the hardware does not support delayed triggering.

## Digital Output Stop Events

Stop Events specify when the KPCI-3140 Series hardware stops writing digital output data.

The KPCI-3140 Series supports the following Stop Events for digital output:

- **None**—Use this event when the DriverLINX operation does not require a Stop Event.
- **Command**—DriverLINX stops the task on software command, i.e., when the application issues a Service Request with a *Stop* operation.
- **Terminal count**—DriverLINX stops the task after the KPCI-3140 Series hardware has written all the data buffers once.
- **Digital**—The hardware stops writing samples when the hardware detects the digital Logical Channel input satisfies the condition specified in the Stop Event.

### ***None or Null Stop Event***

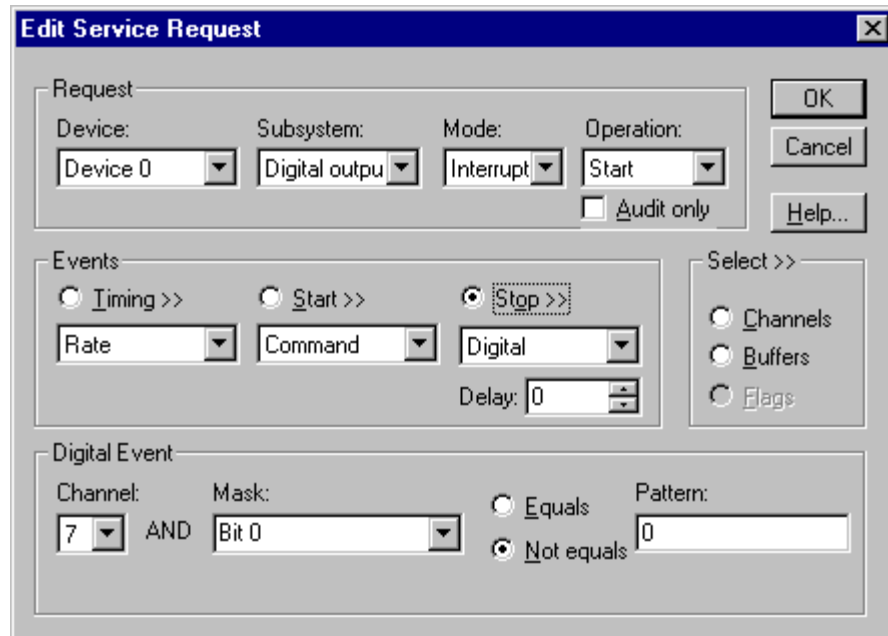
The Null Event specifies that the task does not need a Stop Event to end the task.

### ***Terminal Count Stop Event***

The Terminal Count Event stops data acquisition after DriverLINX has written the digital output data from all the data buffers *once*. Use terminal count when you want to write a fixed amount of data.

## Digital Stop Event (Pre-Triggering)

The KPCI-3140 can write digital output samples *until* the hardware detects a digital trigger condition. Use pre-triggering when you want to synchronize the end of data acquisition with an external signal.



How to set up the KPCI-3140 Series for pre-triggered digital output.

Digital Stop Events contain *mask*, *pattern*, and *match* fields. The mask is logically ANDed with the digital input data on the Logical Channel and then compared with the *pattern* for a match/mismatch.

- Specify the *Channel* as **7** for pattern-sensitive triggering or **8** for edge-sensitive triggering. For hardware-independence, you can specify the hardware pattern-sensitive, external trigger channel by the symbolic constant, *DI\_EXTTRG*.

Unlike most hardware, the edge-sensitive setting triggers upon any change in any of the masked lines. For compatibility with the single-line, edge-sensitive trigger supported by other hardware, use a pattern-sensitive, 1-bit trigger with a **Not equals** match setting.

- Users should connect the external trigger signals to the selected lines of Digital I/O Bank D.
- Specify the *Mask* property as any value between 0 and 255 to indicate that DriverLINX should only compare the selected 1-bit digital input values against the *Pattern* property.
- For pattern-sensitive triggering, specify the *Match* property as **Equals** or **Not equals**. For edge-sensitive triggering, specify the *Match* property as **Not equals**.
- For pattern-sensitive triggering, specify the *Pattern* property as any subset of the *Mask* bits. The edge-sensitive channel does not use the *Pattern* property—specify **0** in this case.

- Specify the *Delay* property as **0**; the hardware does not support delayed triggering.

**Note:**

When the hardware detects the trigger, DriverLINX sends a StopEvent message (or event) that identifies sample following the trigger. For more information, see “Digital Output Messages” on page 58.

## Digital Output Channels

The KPCI-3140 Series allows applications to specify the digital channels using three techniques:

- **Start Channel**—Write data to a single channel.
- **Start/Stop Channel Range**—Write data to a consecutive range of channels.
- **Channel List**—Write data to a list of channels.

### *Digital Output Logical Channels*

The Digital Output subsystem has four configurable digital input/output channels. DriverLINX maps these signals to Logical Channels as shown in the following table:

#### **Model KPCI-3140**

| <b>Logical Channel</b> | <b>DriverLINX Function</b> | <b>KPCI-3100 Series External Connector</b> |
|------------------------|----------------------------|--|
| 0                      | Digital Input/Output       | Digital I/O Bank A 0 ... 7                 |
| 1                      | Digital Input/Output       | Digital I/O Bank B 0 ... 7                 |
| 2                      | Digital Input/Output       | Digital I/O Bank C 0 ... 7                 |
| 3                      | Digital Input/Output       | Digital I/O Bank D 0 ... 7                 |

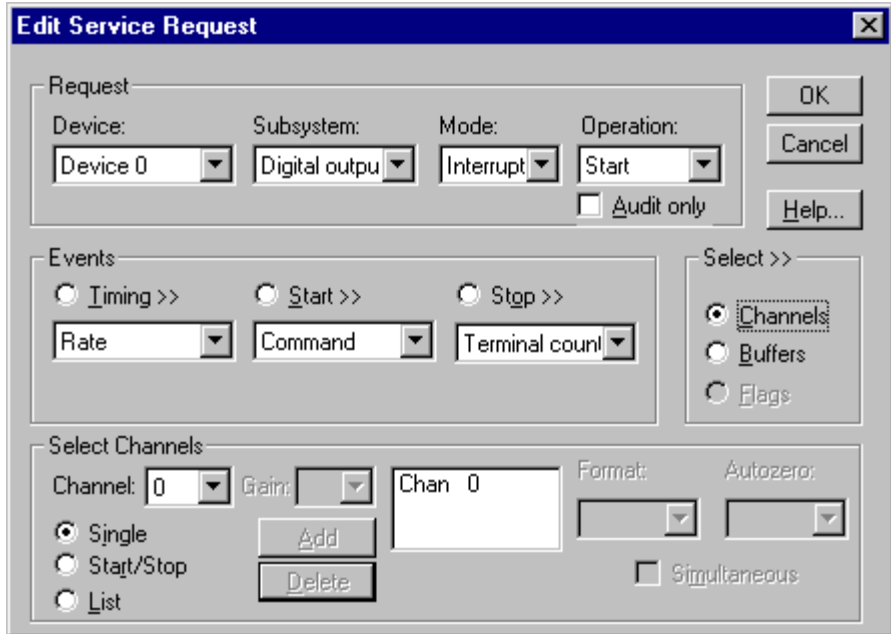
*How DriverLINX maps digital output hardware channels to Logical Channels.*

#### **Notes:**

- If a channel is configured for output, reading it using the Digital Input subsystem returns the last value written.
- Applications can assign a configurable channel to either subsystem using a Configure operation. (See “Digital Channel Configuration” on page 29.)

### *Single Channel Digital Output*

In single channel mode, the KPCI-3140 Series writes all data from one channel.

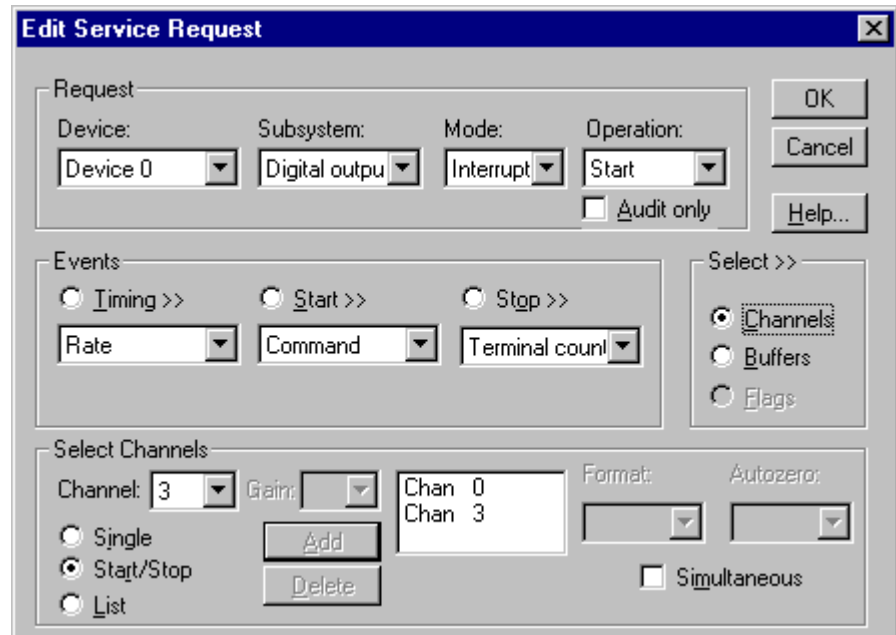


How to set up the KPCI-3140 Series for writing to a single channel.

### Multi-channel Digital Output Range

In multi-channel range mode, the KPCI-3140 Series acquires all data from a consecutive range of digital channels.

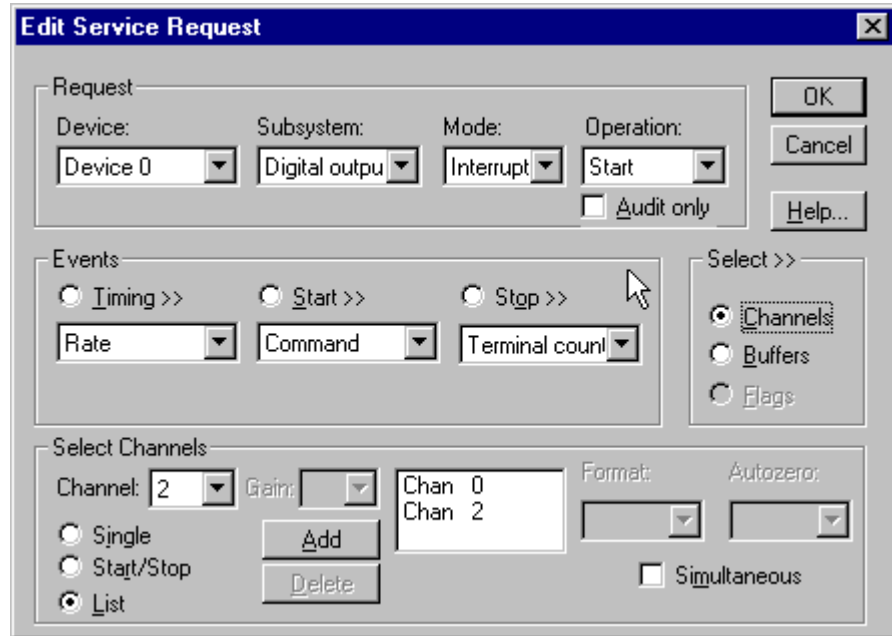
- The Stop Channel must be greater than the Start Channel.



How to set up the KPCI-3140 Series for writing to a consecutive range of channels.

## Multi-channel Digital Output List

In multi-channel list mode, the KPCI-3140 Series acquires all data from an arbitrary list of digital channels.



*How to set up the KPCI-3140 Series to write to an arbitrary list of channels.*



## Digital Output Buffers

DriverLINX supports single-value, single-scan and buffered digital output.

- **For single-value output**, specify the *Number* of buffers as **0**. The buffer for a single value is the *ioValue* property.
- **For single-scan output**, specify the *Number* of buffers as **1** and the number of *Samples* equal to the number of channels.
- **For single-scan output**, specify the *Number* of buffers as **1** and the number of *Samples* equal to the number of channels.

The screenshot shows the 'Edit Service Request' dialog box. It is divided into several sections:

- Request:** Device: Device 0, Subsystem: Digital output, Mode: Interrupt, Operation: Start. There is an 'Audit only' checkbox which is unchecked.
- Events:** Three radio buttons: Timing >>, Start >>, and Stop >>. Below them are dropdown menus for Rate, Command, and Terminal count.
- Select Buffers:** Samples: 500, Number: 2. There are checkboxes for Notify and Auto-allocate, both of which are unchecked.
- Select >>:** Three radio buttons: Channels, Buffers (which is selected), and Flags.

*How to set up the KPCI-3140 Series to store samples in buffers.*

### Buffer Usage

DriverLINX writes buffers sequentially until the task stops. During the task, only empty buffers are available to the application. Except for tasks that stop on terminal count, the last buffer may be only partially used. Use a Status operation to determine the location of the last sample.

## Digital Output Messages

For digital output operations, DriverLINX can report the following messages to the application:

| <b>DriverLINX Message</b> | <b>Explanation</b>   |
|---------------------------|--|
| Service Start             | DriverLINX has started the acquisition task.                             |
| Service Done              | DriverLINX has completed the acquisition task.                           |
| Start Event               | DriverLINX has detected the hardware start event.                        |
| Stop Event                | DriverLINX has detected the hardware stop event.                         |
| Buffer Filled             | DriverLINX has emptied a buffer.   |
| Data Lost                 | DriverLINX has detected a data overrun                                   |
| Critical Error            | DriverLINX has encountered an unexpected hardware or software condition. |

*DriverLINX Event messages for digital output.*

For detailed explanations of these messages see one of the following references:

- *DriverLINX Technical Reference Manual* for C/C++ users
- *DriverLINX/VB Technical Reference Manual* for VB or Delphi users

# Counter/Timer Subsystem

The KPCI-3140 Series provides counter/timers for digital input/output pacing as well as independent counter/timer tasks. The KPCI-3140 Series uses the same proprietary counter/timer chip as the KPCI-3100 Counter/Timer board.

The KPCI-3140 Series also has external interrupt inputs via Digital I/O Bank D. The driver can start or stop Counter/Timer tasks in response to these inputs. See “Digital Input Subsystem Signals” on page 24 for connection details.

The KPCI-3140 has eight 16-bit general-purpose counter/timers that support a wide variety of counting and generation functions. DriverLINX designates these counters as Logical Channels 0 through 7. Each counter/timer has a clock input, a gate input and a counter output.

The KPCI-3140 also has four 24-bit dedicated counter/timers. These can be used to generate TimerTic messages or to pace buffered digital input or output. DriverLINX designates these counters as Logical Channels 8 through 11. These channels have no external connections.

## Model KPCI-3140

| Logical Channel | DriverLINX Function            | KPCI-3100 Series External Connector*                         |
|-----------------|--------------------------------|--|
| 0               | Pacing and Counter/Timer tasks | User Clock Input 0<br>User Clock Output 0<br>External Gate 0 |
| 1               | Pacing and Counter/Timer tasks | User Clock Input 1<br>User Clock Output 1<br>External Gate 1 |
| 2               | Pacing and Counter/Timer tasks | User Clock Input 2<br>User Clock Output 2<br>External Gate 2 |
| 3               | Pacing and Counter/Timer tasks | User Clock Input 3<br>User Clock Output 3<br>External Gate 3 |
| 4               | Pacing and Counter/Timer tasks | User Clock Input 4<br>User Clock Output 4<br>External Gate 4 |
| 5               | Pacing and Counter/Timer tasks | User Clock Input 5<br>User Clock Output 5<br>External Gate 5 |
| 6               | Pacing and Counter/Timer tasks | User Clock Input 6<br>User Clock Output 6<br>External Gate 6 |
| 7               | Pacing and Counter/Timer tasks | User Clock Input 7<br>User Clock Output 7<br>External Gate 7 |
| 8               | Pacing                         |  |
| 9               | Pacing                         |  |
| 10              | Pacing                         |  |
| 11              | Pacing                         |  |

\*Interrupts from Digital I/O Bank D 0 ... 7 can start or stop any counter/timer.

An application specifies operating parameters for a counter/timer using a Rate Event for the timing event in a service request. A Rate Event has clock source, mode and gate properties. DriverLINX defines many useful generic counter/timer functions that can be performed with most counter/timer chips. Alternatively, you can use DriverLINX to program the board in specific modes of the proprietary, KPCI-3140 compatible, counter/timer chip. See the *DriverLINX Counter/Timer User's Guide* for detailed information on programming the KPCI-3140 counter/timer chip.

The following sections discuss usage of Rate Event properties for both input/output task and counter/timer tasks.

## Counter/Timer Channel Usage

The following table shows which Logical Channels are available for timing tasks on each subsystem.

### Counter/Timer Logical Channel Usage

| Subsystem      | Counter/Timer Channel |       |       |       |       |       |       |       |       |       |       |       |
|----------------|-----------------------|-------|-------|-------|-------|-------|-------|-------|-------|-------|-------|-------|
|                | 0                     | 1     | 2     | 3     | 4     | 5     | 6     | 7     | 8     | 9     | 10    | 11    |
| Digital Input  | Avail                 | Avail | Avail | Avail | Avail | Avail | Avail | Avail | Def   | Avail | Avail | Avail |
| Digital Output | Avail                 | Avail | Avail | Avail | Avail | Avail | Avail | Avail | Avail | Def   | Avail | Avail |
| Counter/Timer  | Def                   | Avail | Avail | Avail | Avail | Avail | Avail | Avail | Avail | Avail | Avail | Avail |

Avail = Available; Def = Default.

For portability across drivers, applications can specify the default timing channel using the symbolic constant DEFAULTTIMER, rather than a specific channel number.

A Counter/Timer Subsystem Task can read the current value of any of the 16-bit counter/timers (Logical Channels 0-7) by referencing the channel in the service request's channel list or range.

## Clock Sources and Modes

DriverLINX defines one internal and several external clock sources, and several modes for Rate Events on the KPCI-3140 Series. Some apply only to pacing while other are only for certain counter/timer tasks. The following tables lists the clock sources and the modes to which they apply for use with each subsystem:

### Digital Input / Digital Output

| Name               | Source                   | Modes   |
|--------------------|--------------------------|---------|
| Internal 1         | Internal 40 MHz          | RateGen |
| External External- | External A/D Clock Input | RateGen |

### Counter/Timer

| Name       | Source                             | Modes*   |
|------------|------------------------------------|----------|
| Internal 1 | Internal 40 MHz                    | RateGen  |
| TCn-1      | Output of previous counter/timer** | Divider  |
| External   | User Counter Input 0               | VDCGen   |
| External+  | User Counter Input 1               | SqWave   |
|            | User Counter Input 2               | Freq     |
|            | User Counter Input 3               | Freq32   |
|            | User Counter Input 4               | Count    |
|            | User Counter Input 5               | Count32  |
|            | User Counter Input 6               | Count64  |
|            | User Counter Input 7               | PulseWd  |
|            |                                    | PulseGen |
|            |                                    | OneShot  |

\*Some modes use multiple counter/timers so they do not apply to all channels. See the *Counter/Timer Programming Guide* for details.

\*\*Applies only to channels 1 through 3 and 5 through 7.

For portability across hardware with different drivers, applications can use the **Sec2Tics** function to determine the tic period of **Internal 1**.

## Gate Settings

The *Gate* setting specifies how the gate signal affects the operation of the internal or external clock. The following settings are valid, depending on the subsystem:

| Gate Setting  | Counter/Timer Channel |   |   |   |   |   |   |   |   |   |    |    |
|---|-----------------------|---|---|---|---|---|---|---|---|---|----|----|
|   | 0                     | 1 | 2 | 3 | 4 | 5 | 6 | 7 | 8 | 9 | 10 | 11 |
| <b>Enabled</b> selects the gate's default enabled mode. On the KPCI-3140 Series this is either High Level or Rising Edge, depending on the rate mode. | √                     | √ | √ | √ | √ | √ | √ | √ |   |   |    |    |
| <b>Disabled</b> allows the clock to run independently of the gate signal.   | √                     | √ | √ | √ | √ | √ | √ | √ | √ | √ | √  | √  |
| <b>No Connect</b> normally allows the clock to run independently of the gate signal.  | √                     | √ | √ | √ | √ | √ | √ | √ | √ | √ | √  | √  |
| <b>High Level</b> enables the clock only while the gate signal is high.   | √                     | √ | √ | √ | √ | √ | √ | √ |   |   |    |    |
| <b>Low Level</b> enables the clock only while the gate signal is low.   | √                     | √ | √ | √ | √ | √ | √ | √ |   |   |    |    |
| <b>High Edge</b> enables the clock after the first rising edge in the gate signal.  | √                     | √ | √ | √ | √ | √ | √ | √ |   |   |    |    |
| <b>Low Edge</b> enables the clock after the first falling edge in the gate signal.  | √                     | √ | √ | √ | √ | √ | √ | √ |   |   |    |    |

**Note:** No Connect specifies that if the application is running with a board that cannot disable its gate, then the user should leave the gate unconnected so that it does not interfere with the data-acquisition task. This mode is accepted by all DriverLINX drivers.

## Counter/Timer Tasks

Counter/timer tasks, as distinguished from input/output task pacing, perform various counting, measuring, and wave and pulse generation functions. Counter/timer hardware varies widely in complexity and utility. To simplify most counter/timer tasks while allowing applications to access to features of particular chips, DriverLINX allows applications to specify either function-oriented task or hardware-oriented tasks.

DriverLINX's function-oriented tasks that the KPCI-3140 Series can perform are

- **Event Counting**  
Repetitive 16, 32 or 64-bit event counting with optional level gating  
Non-repetitive 16, 32 or 64-bit event counting without gating
- **Frequency Measurement**  
Non-repetitive, 16 or 32-bit frequency measurement with optional level gating (these functions require external interconnections)
- **Pulse Width Measurement**  
Non-repetitive measurement of high or low pulses with optional level gating
- **Pulse Generation**  
Non-repetitive pulse generation
- **Frequency Generation** with optional level gating  
Variable duty cycle waveform generation  
Square wave generation  
Periodic pulse trains

For more information on these functions, see in “Using Task-Oriented Functions” the *Counter/Timer Programming Guide*.

DriverLINX's TimerTic task simply starts a single counter/timer using an internal or external clock source. It sends the application a TimerTic message after a specified number of clock pulses. For more information see in “Using a Counter/Timer to Generate Clock Messages” the *Counter/Timer Programming Guide*.

DriverLINX's hardware-oriented tasks start one or more counter/timers as a group. Applications can program the KPCI-3140 Series-compatible counter/timer chip in specific hardware modes. The counter/timer chip's modes are

- **0**—Non-retriggerable One-shot
- **1**—Retriggerable One-shot
- **2**—Continuous Increment

Applications can configure one or more counter/timers and interconnect them with the KPCI-3140 circuitry. For more information see in “Configuring a Counter/Timer Channel” the *Counter/Timer Programming Guide*.

DriverLINX then starts the group of counter/timers at the same time Application can then periodically poll for the current count or use interrupt mode to buffer counter readings. For more information see in “Status Polling a Counter/Timer” the *Counter/Timer Programming Guide*.

### **Reading Digital Input Channels with the Counter/Timer Subsystem**

`CHAN_SE_DIG=2^13`

*This constant is defined in `drvlinx.h`.*

The KPCI-3140 Series can sample digital input channels along with counter/timer channels. To use this feature, simply add the *digital input* logical channel numbers to the channel-gain list of a *counter/timer* service request. For each entry, set the gain equal to the special value, CHAN\_SE\_DIG. Instead of returning a counter/timer channel's count in the data buffer, the driver returns the eight-bits data value from the digital input channel in the low byte of the buffer location. The high byte of the buffer location is set to zero.

## Counter/Timer Messages

For counter/timer operations, DriverLINX can report the following messages to the application:

| <b>DriverLINX Message</b> | <b>Explanation</b>   |
|---------------------------|--|
| Service Start             | DriverLINX has started the counter/timer task.                           |
| Start Event               | DriverLINX has detected the hardware start event.                        |
| Stop Event                | DriverLINX has detected the hardware stop event.                         |
| Buffer Filled             | DriverLINX has filled a buffer.  |
| Data Lost                 | DriverLINX has detected a data overrun                                   |
| Service Done              | DriverLINX has completed the counter/timer task.                         |
| Critical Error            | DriverLINX has encountered an unexpected hardware or software condition. |

*DriverLINX Event messages for counter/timer tasks.*

For detailed explanations of these messages see one of the following references:

- *DriverLINX Technical Reference Manual* for C/C++ users
- *DriverLINX/VB Technical Reference Manual* for VB or Delphi users



# Uninstalling DriverLINX

---

## How do I uninstall DriverLINX?

DriverLINX consists of three separate component installations:

- DriverLINX for Keithley KPCI-3140 Series
- DriverLINX Programming Interfaces
- DriverLINX Documentation

You can uninstall the last two installations at any time without interfering with compiled applications that require DriverLINX drivers. To uninstall the latter components, run the “Add/Remove Programs” tool in the Windows Control Panel.

To uninstall DriverLINX drivers for the Keithley KPCI-3140 Series, you must

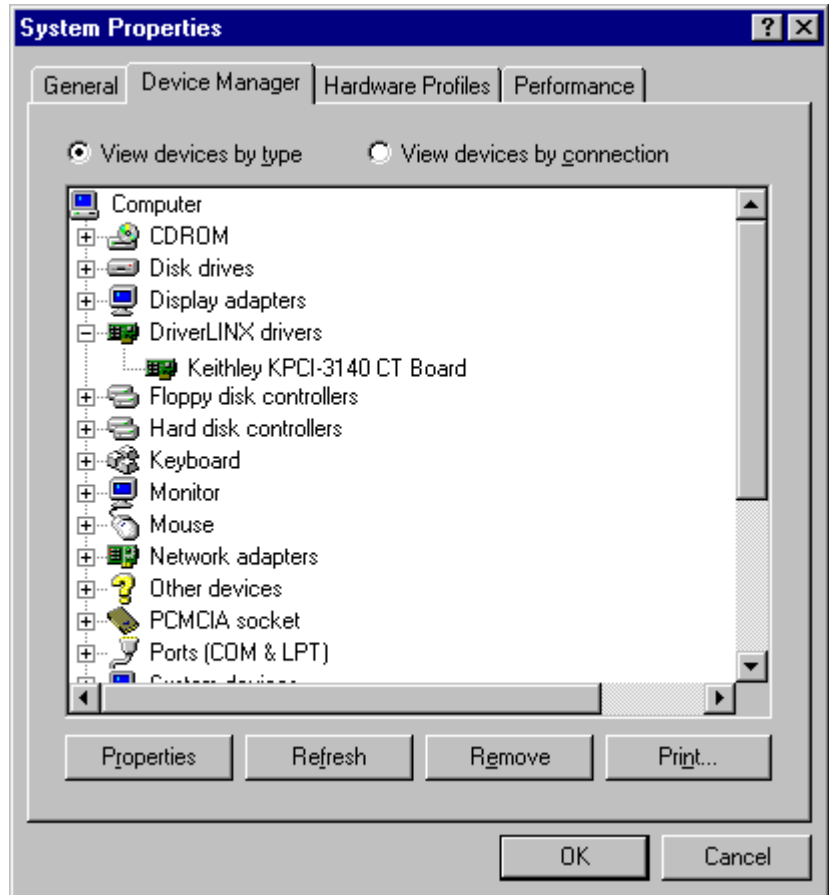
- Disable the DriverLINX driver.
- Shut down your computer to remove the hardware.
- Reboot your computer to unload the driver.
- Run the DriverLINX uninstall program.

### ***How to Disable a DriverLINX Driver in Windows NT***

1. From the Windows Start menu, select “Settings”, then “Control Panel”. Left click on the DriverLINX Configuration icon in the Control Panel.
2. Select the KPCI-3140 devices you want to disable.
3. Right click on each device and select “Disabled” on the popup menu.
4. Repeat steps 2-3 for each KPCI-3140 card that you are uninstalling.
5. Close the DriverLINX Configuration Panel.
6. When finished, shut down your computer and physically remove any installed KPCI-3140 hardware.
7. Reboot Windows.
8. To finish uninstalling, see “How to Remove DriverLINX for Keithley KPCI-3140 Series” on page 67.

## How to Disable a DriverLINX Driver in Windows 95/98

1. From the Windows Start menu, select “Settings”, then “Control Panel”. Left click on the System icon in the Control Panel. Select the “Device Manager” tab in the System Properties dialog.
2. Left click the “+” icon next to “DriverLINX drivers” to display the installed Keithley KPCI-3140 devices.



3. Select the KPCI-3140 device you want to disable.
4. Click the “Remove” button.
5. In the “Confirm Device Removal” dialog, select “OK”.
6. Repeat steps 3-5 for each KPCI-3140 card or driver that you uninstalling.
7. When finished, click “Close”, shut down your computer, and physically remove any installed KPCI-3140 hardware.
8. Reboot Windows.
9. To finish uninstalling, see “How to Remove DriverLINX for Keithley KPCI-3140 Series” on page 67.

### ***How to Remove DriverLINX for Keithley KPCI-3140 Series***

1. From the Windows Start menu, select “Settings”, then “Control Panel”. Left click on the Add/Remove Programs icon in the Control Panel.
2. Select “DriverLINX for Keithley KPCI-3140 Series” in the Add/Remove Programs Properties dialog.
3. Click the “Add/Remove...” button.
4. Answer “Yes” to “Are you sure you want to remove ‘DriverLINX for Keithley KPCI-3140 Series’ and all of its components?” in the Confirm File Deletion dialog.
5. The DriverLINX uninstall program will proceed.

---

The uninstall program will not remove the folder, “\DrvLINX4\System”. This folder contains copies of any \Windows\System or \Windows\System32 files that the original DriverLINX installation updated.

---



# Troubleshooting

---

## Solving Problems

Correct operation of your KPCI-3140 hardware requires successful completion of three steps.

1. Windows recognizes KPCI-3140 hardware and installs drivers.
2. You configure the KPCI-3140 drivers using the DriverLINX Configuration Panel.
3. Windows loads the KPCI-3140 drivers into memory.

If you are having a problem installing or configuring your KPCI-3140 product, review the following notes. If these notes do not solve your problem, or your problem is not described, then contact technical support and fully describe your problem.

### Solving Problems Recognizing and Installing Drivers

Windows must recognize the KPCI-3140 hardware and then install KPCI-3140 drivers for the hardware.

- For Windows to automatically recognize the KPCI-3140 hardware, you must install a KPCI-3140 product into your machine and restart the computer.
- For Windows to install KPCI-3140 drivers, you must install the KPCI-3140 driver software on the DriverLINX CD.

If you installed the KPCI-3140 hardware before you installed the DriverLINX software, Windows 95/98 may install the KPCI-3140 hardware without drivers. To fix this, you must instruct Windows to reinstall the Plug-and-Play driver. Follow the notes below for instructions.

### ***Fixing Problems Installing Hardware Before Software on Windows 95/98***

If you installed the KPCI-3140 hardware before installing the DriverLINX software, Windows 95/98 may install the hardware incorrectly.

1. Start Windows Device Manager.

2. Search for “DriverLINX drivers”. If you do not see it, go to step 4.
3. Click on the “+” icon next to “DriverLINX drivers” and search for “PCI Card”. If you find “PCI Card”, go to step 6, otherwise go to the next step.
4. Search for “Other devices”.
5. Click on the “+” icon next to “Other devices” and search for “PCI Card”.
6. Select “PCI Card”.
7. Click “Remove” in the Device Manager.
8. Highlight “Computer” in the Device Manager and click “Refresh”.
9. Windows should re-install your hardware under “DriverLINX drivers”.
10. Answer “Yes” to “Do you want to restart your computer now?”
11. After rebooting your computer, you must configure DriverLINX. See “Configuring the KPCI-3140 Series” on page 11.

## Solving Problems Configuring the Drivers

Windows automatically assigns hardware resources for the KPCI-3140 Series, but you must still configure the KPCI-3140 drivers before using them. The DriverLINX configuration only requires that you assign each KPCI-3140 product a unique Logical Device number. And, on Windows NT, you must manually select the hardware model of your KPCI-3140 Series board. See “Configuring the KPCI-3140 Series” on page 11 for more information.

## Solving Problems Loading Drivers

Before the KPCI-3140 drivers can load, you must

1. Install the DriverLINX software.
2. Install the KPCI-3140 hardware into your computer.
3. Configure DriverLINX.
4. Reboot your computer.

If you have not completed the above steps, please do so before proceeding.

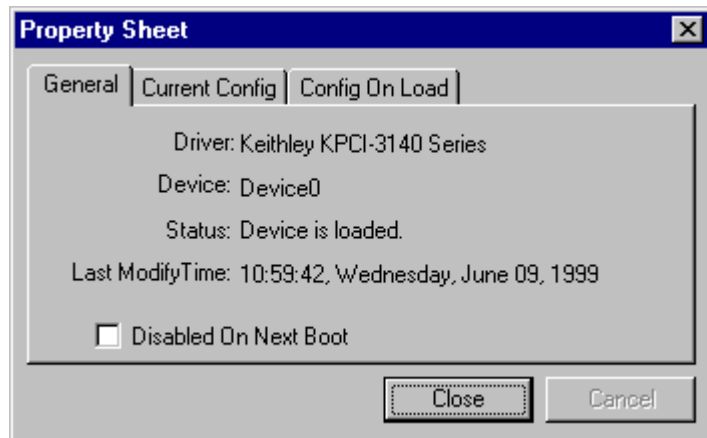
On both Windows NT and Windows 95/98, the operating system will automatically assign hardware resources to the KPCI-3140 cards. Automatic resource assignment can fail sometimes on

- Older PCI computers.
- Computers with ISA cards installed.
- Computers with no free hardware resources.
- Computers running Windows NT 4.0 with a BIOS setting designating the operating system as Plug-and-Play Aware.

Sorting through all possibilities can be a challenge due to the sheer number of combinations of PCI hardware designs, PC plug-in boards, and versions of Windows. The following sections will help you gather information about why a driver may have failed to load. This information is essential for you or technical support to solve your problem.

## ***Did the DriverLINX Driver Load?***

1. Run “DriverLINX Configuration” from Windows Control Panel.
2. Select the “DriverLINX” tab.
3. Click the “+” icon next to DriverLINX to expand the list of drivers, if necessary.
4. Select “Keithley KPCI-3140 Series”. Click “+”, if necessary, to expand the list.
5. Select the line with the number of the Logical Device you configured. If the number does not exist on Windows NT or, on Windows 95/98, you see only a hardware description, you did not configure the driver. See “Configuring the KPCI-3140 Series” on page 11.
6. Click the “Properties...” button and then select the “General” tab.
7. Do you see “Status: Device Loaded”? If not, did you reboot the computer after configuring? If not, reboot now and repeat the above steps.



8. If you rebooted the computer after configuring and Windows did not load your device, see “Checking for Device Errors” on page 71.

## ***Checking for Device Errors***

When a DriverLINX kernel driver cannot load, it usually writes an explanation into the system event log. You can view this log under Windows 95/98 or Windows NT using the DriverLINX Event Viewer.

Windows 95/98 maintains additional driver information in the Device Manager. Also see “Getting More Driver Information on Windows 95/98” on page 72.

1. Run “DriverLINX Event Viewer” from the DriverLINX folder.
2. Click on the “+” icon next to “DriverLINX” in the left panel.
3. Select the abbreviation for your driver.
4. Does the first line in the right panel show a current error?
5. Double click on the error line to see more detail and an explanatory message.
6. If you cannot resolve the problem yourself, please provide this error information when contacting technical support.

## ***Getting More Driver Information on Windows 95/98***

Windows 95/98 reports additional information about device status using the Device Manager. To access this utility,

1. Right click on “My Computer” and then select “Properties”.
2. Select “Device Manager” and “View devices by type
3. Does “DriverLINX drivers” appear in the list? If not, see “Solving Problems Recognizing and Installing Drivers” on page 69.
4. Click the “+” next to “DriverLINX drivers”.
5. Does your KPCI-3140 product appear in the list? If not, see “Solving Problems Recognizing and Installing Drivers” on page 69.
6. Does the icon next to your KPCI-3140 product display an exclamation point (!)? If no, Windows has loaded your KPCI-3140 driver.
7. Select the line with the “!” and then click “Properties”.
8. The General tab will show the reason why the driver did not load.
9. The Resources tab will show if Windows detected an unresolvable hardware conflict.

## ***Getting More Driver Information on Windows NT***

On Windows NT, the only reasons that a driver does not load are

- You did not install the driver software.
- You did not correctly configure the driver.
- You changed the driver startup parameters.
- Your BIOS setting designates the operating system as Plug-and-Play aware. (Applies only to Window NT 4.0).

An incorrectly configured driver will report the reasons that it failed to load into the Windows Event Log. See “Checking for Device Errors” on page 71 for more information.

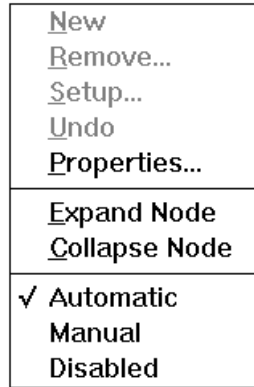
Under Windows NT 4.0, a Logical Device may not load because the operating system does not always configure Plug-and-Play PCI devices properly. This may result in unexpected or no Event Log entries. To work around this, set your computer’s BIOS to configure Plug-and-Play devices before it starts the operating system. On various computers the BIOS setting is called “Plug-and-Play Aware OS – Disabled” or “Plug & Play OS – No”.

On Windows NT, DriverLINX drivers load automatically during system boot. An administrator can change the startup command for any NT driver to either “manual” or “disabled”.

1. Run “DriverLINX Configuration” from Windows Control Panel.
2. Select the “DriverLINX” tab.
3. Click the “+” icon next to DriverLINX to expand the list of drivers, if necessary.
4. Select “Keithley KPCI-3140 Series”. Click “+”, if necessary, to expand the list.
5. Select the line with the number of the Logical Device that did not load.



6. Right click the mouse to see a popup menu.



7. Select “Automatic” to instruct Windows to load the driver the next time you reboot.

---

## Generating a DriverLINX Configuration Report

Your DriverLINX installation includes a troubleshooting tool that generates a report of your DriverLINX configuration. If you call Technical Support, after reading “Solving Problems” on page 69, they may ask you to generate and e-mail this report to help you solve installation and configuration problems.

### What is in the Report?

The troubleshooting tool analyzes your computer to obtain information about DriverLINX and operating system software that would assist Technical Support in troubleshooting a problem you are having. It includes information on DriverLINX files, environment variables, registry entries, hardware and the operating system.

### How do I Generate the Report?

You can easily generate the report by clicking the shortcut in this topic in the help file. Once the troubleshooting tool generates the report, you will have the opportunity to review it and make deletions, if desired, before e-mailing it to Technical Support. If you do not have direct access to e-mail, you can save the report to a disk file and send a copy later. A Technical Support engineer will guide you through these steps when you are asked to send a report.